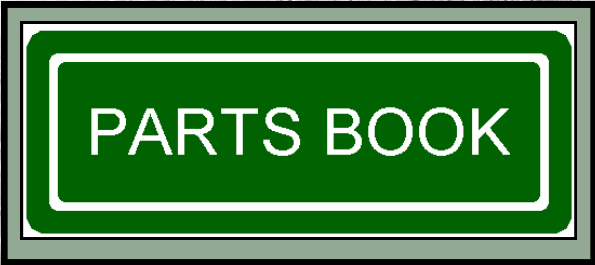




61-SERIES

3003

PHILLIPS | **ROTARY HARROW**



PART NO. 61-PB-01
PRINTING DATE: MAR 2016

TABLE OF CONTENTS

MAIN FRAME ASSEMBLY

HITCH ASSEMBLY	3
HOSE HANGER & HITCH JACK	3
MAIN FRAME ASSEMBLY	4
FRONT WING MOUNT & BRACES	5
MAIN WHEEL ASSEMBLY	6
CTD MAIN WHEEL HUB & SPINDLE ASSEMBLY	7
ELDALE MAIN WHEEL HUB & SPINDLE ASSEMBLY	8

TAIL FRAME ASSEMBLY (PRIOR TO 2007)

TAIL FRAME (PRIOR TO 2007)	10
TAIL TOP BRIDGE (PRIOR TO 2007)	11

TAIL FRAME ASSEMBLY (2007 TO PRESENT)

TAIL FRAME (2007 TO PRESENT)	14
TAIL TOP BRIDGE (2007 TO PRESENT)	15
TAIL CASTER WHEEL ASSEMBLY	16-17
CTD CASTER WHEEL HUB & SPINDLE ASSEMBLY	18
ELDALE MAIN WHEEL HUB & SPINDLE ASSEMBLY	19
TAIL LOCK ASSEMBLY	20
TAIL TOOL CATCHER	21

RIGHT MAIN WING ASSEMBLY

RIGHT MAIN WING FRAME	23
WING CYLINDER	24
WING TOOL CATCHER	25
RIGHT TOOL TENSIONER EXTENSION	26-27
WING CASTER WHEEL ASSEMBLY	28-29
CTD CASTER WHEEL HUB & SPINDLE ASSEMBLY	30
ELDALE CASTER WHEEL HUB & SPINDLE ASSEMBLY	31

LEFT MAIN WING ASSEMBLY

LEFT MAIN WING FRAME	33
LEFT TOOL TENSIONER EXTENSION	34

LEFT & RIGHT TOOLING ASSEMBLY

LEFT & RIGHT SIDE TOOLING ASSEMBLY (S/N 30TA-01001 TO PRESENT)	36-37
(S/N PRE 30TA-00099)	38-39
TOOLING HOUSING ASSEMBLY (2007 TO PRESENT)	40
(S/N 30TA-01001 TO PRESENT)	41
(S/N PRE 30TA-00099)	42

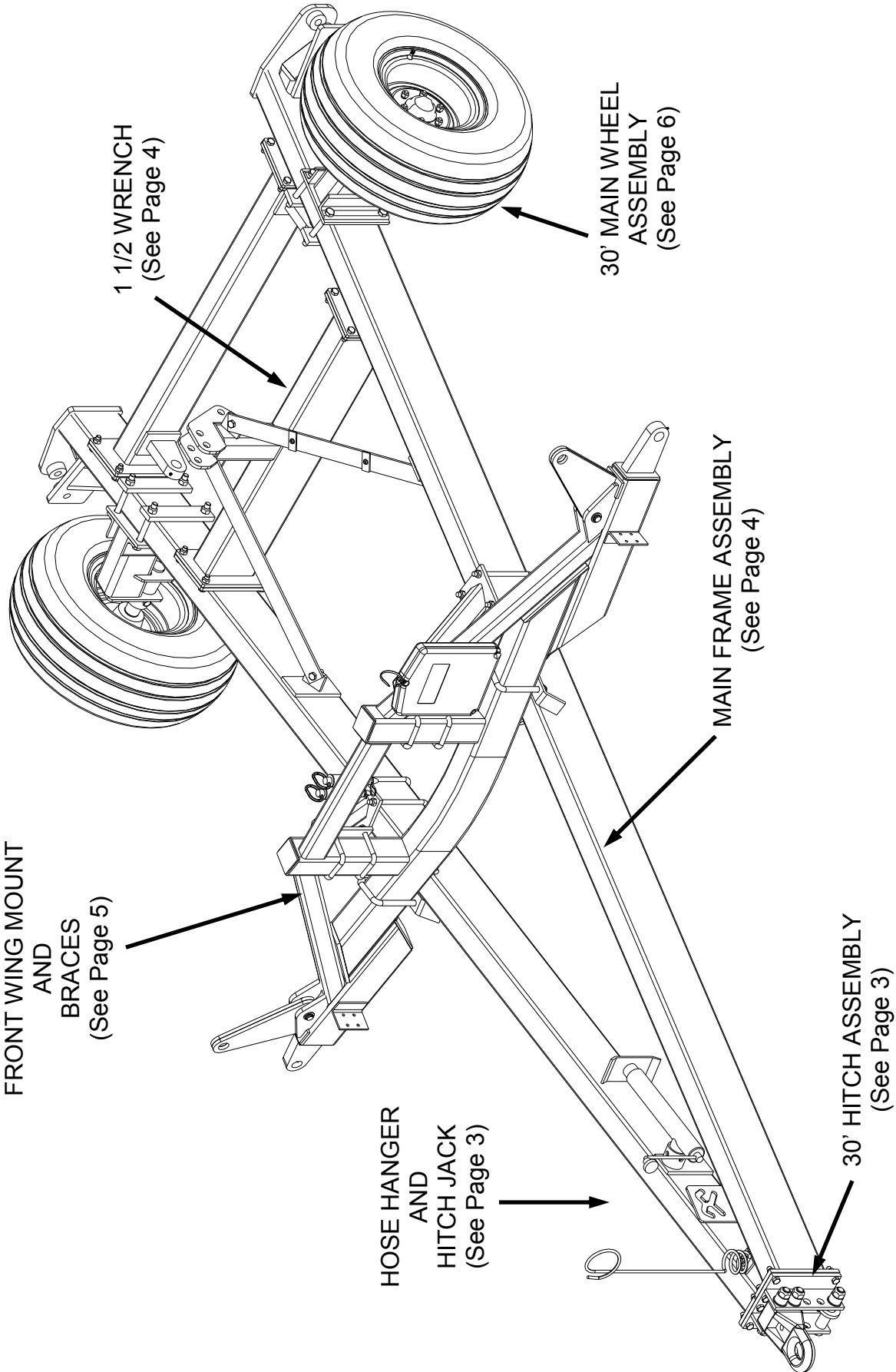
HYDRAULIC COMPONENTS

HYDRAULIC SCHEMATIC	44-45
TAIL HYDRAULIC CYLINDER (3 1/2" X 12")	46
WING HYDRAULIC CYLINDER (4" X 30")	47

MISCELLANEOUSE COMPONENTS

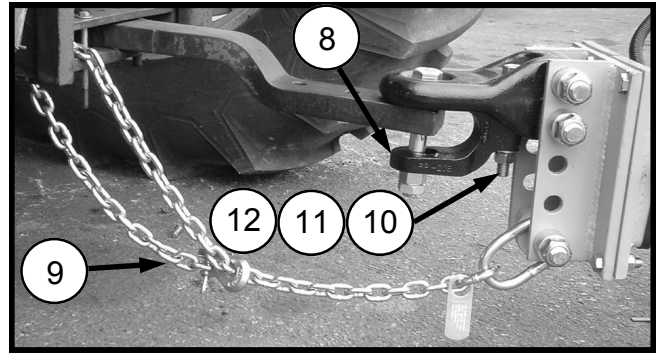
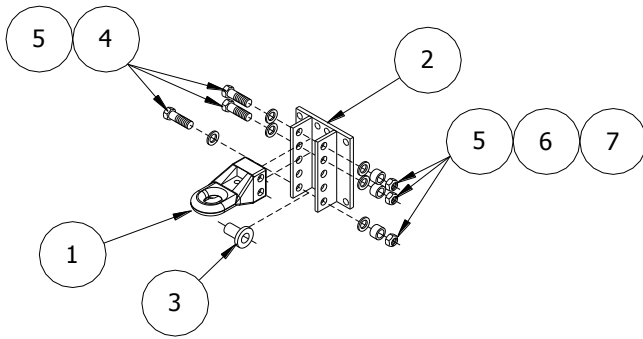
DECAL SCHEMATIC	48-49
HOSE CLAMP SCHEMATIC	50

MAIN FRAME ASSEMBLY



30' ROTARY HARROW

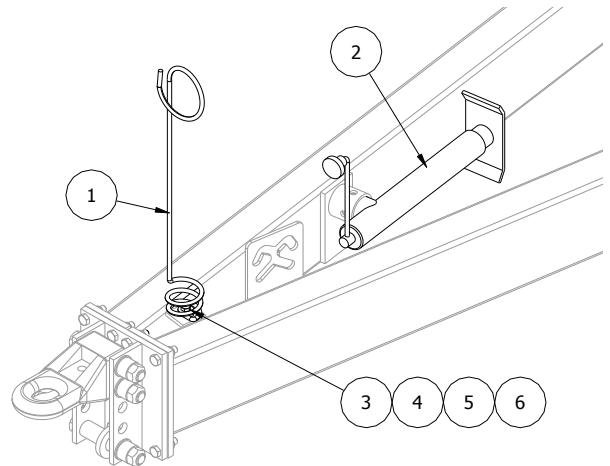
HITCH ASSEMBLY



ITEM	PMF PART NO	KMC PART NO	DESCRIPTION	QTY
1	31-10951-03	61-057-003	IMPLEMENT HITCH CASTING	1
2	05-51062-01	61-080-020	HITCH ATTACH PLATE 2000	1
3	05-51063-01	61-080-063	SAFETY CHAIN BAR	1
4	31-50199-09	48-200600	1" X 7 1/2" G8 HEX HD BOLT	3
5	31-50399-03	62-020050	1" SAE FLATWASHER, PLT	6
6	05-51013-01	61-024-041	LEVER GUIDE, PLT	3
7	31-50299-05	72-030100	1" UNITORQUE NUT G8 PLT	3
*8	31-10951-02	53-050-014	HITCH, CLEVIS CAST	1
9	31-10959-01	61-050-034	AG SAFETY TOW CHAIN	1
*10	31-50175-14	48-200057	HITCH, BOLT	1
*11	31-50275-02	68-010380	HITCH, NUT	1
*12	31-50375-02	66-010350	LOCKWASHER, 3/4 PLT	1

* These parts make up 61-082-003 (Two Clevis Conversion).

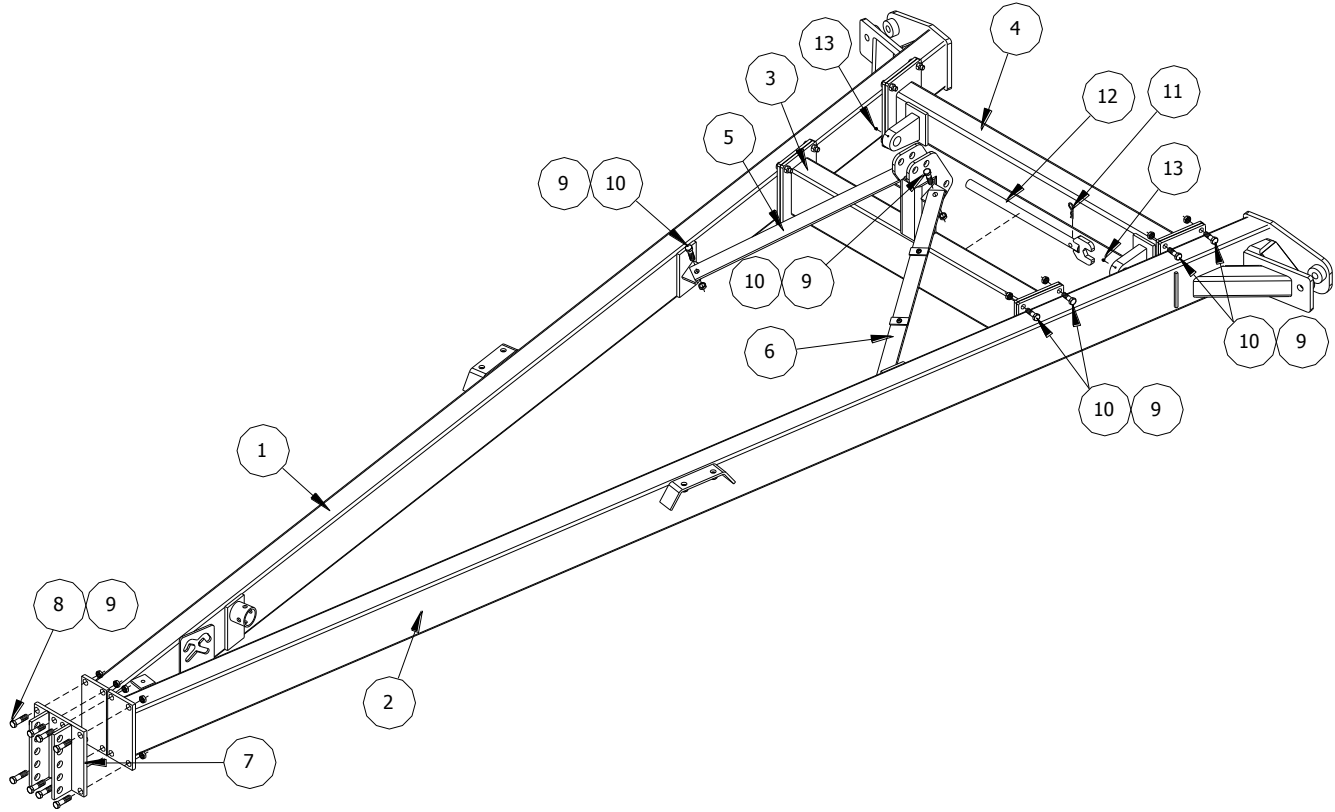
**HOSE HANGER
AND
HITCH JACK**



ITEM	PMF PART NO	KMC PART NO	DESCRIPTION	QTY
1	31-10307-01	61-050-023	PIG TAIL HOSE HOLDER	1
2	31-10950-04	61-050-033	HITCH JACK, 7000 LB W/O TUBE	1
3	31-50150-03	48-090595	CAPSCREW, 1/2 X 1 1/2 G5 PLT	1
4	31-50350-02	62-010200	FLATWASHER, 1/2 STD PLT	1
5	31-50350-01	66-010250	LOCKWASHER, 1/2 PLT	1
6	-	68-010250	HEX NUT, 1/2 PLT	1

30' ROTARY HARROW

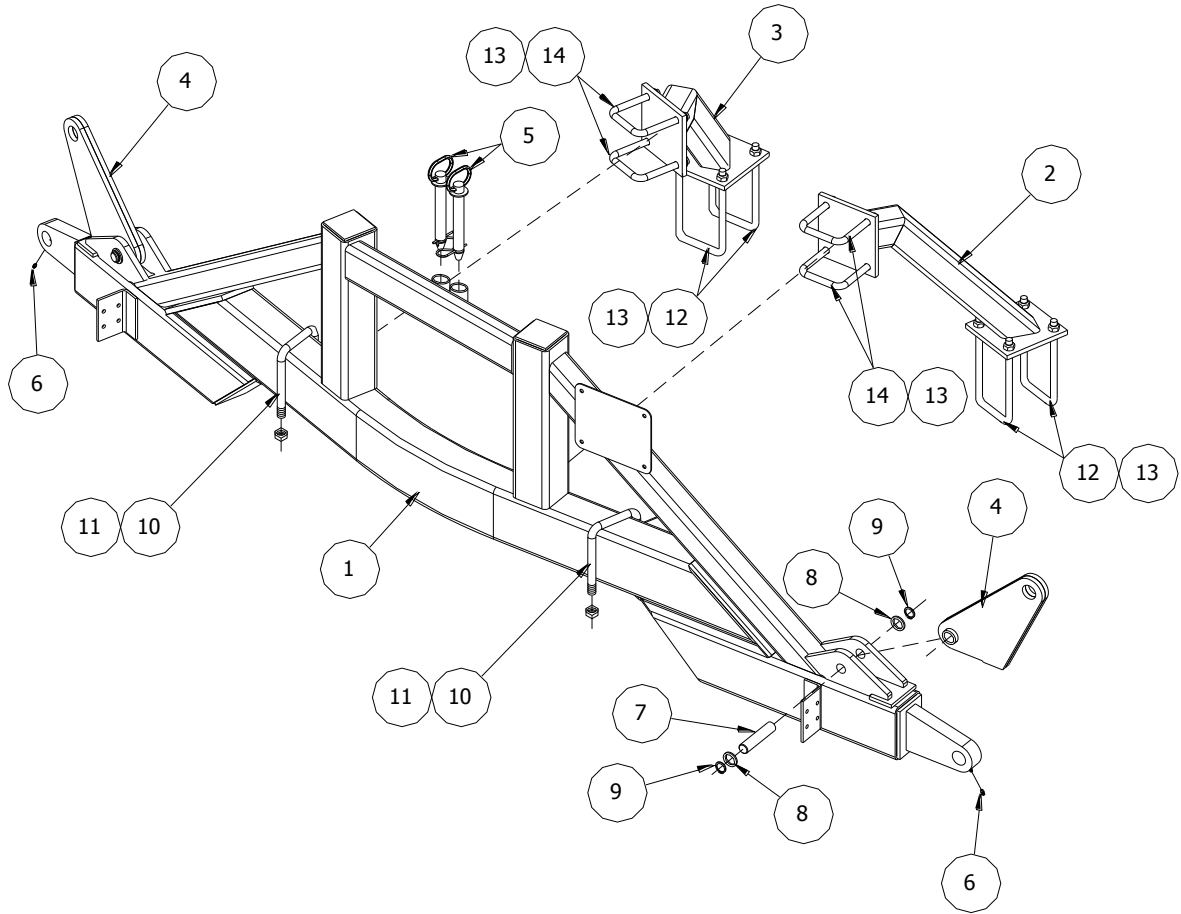
MAIN FRAME ASSEMBLY



ITEM	PMF PART NO	KMC PART NO	DESCRIPTION	QTY
1	05-55002-01	61-080-082	MAIN BEAM - R.H.	1
2	05-55002-02	61-080-021	MAIN BEAM - L.H.	1
3	05-55005-01	61-080-085	MIDDLE BEAM	1
4	05-55004-01	61-080-084	REAR BEAM	1
5	05-55003-02	61-023-041	LH MIDDLE BEAM BRACE	1
6	05-55003-01	61-080-083	RH MIDDLE BEAM BRACE	1
7	05-51062-01	61-080-020	HITCH ATTACH PLATE 2000	1
8	31-50163-13	48-200033	5/8 X 2 1/4 UNC BOLT	8
9	31-50263-05	72-020050	LOCKNUT, 5/8 STOVER G"C" PLT	28
10	31-51163-12	48-200029	5/8 X 2 UNC BOLT	20
11	31-10601-01	-	PIN, 1/8 X 2 9/16 HITCH	1
12	05-51038-01	61-080-049	1 1/2 WRENCH	1
13	31-50904-02	02-050-005	GREASE NIPPLE, 1/4 UNF	2

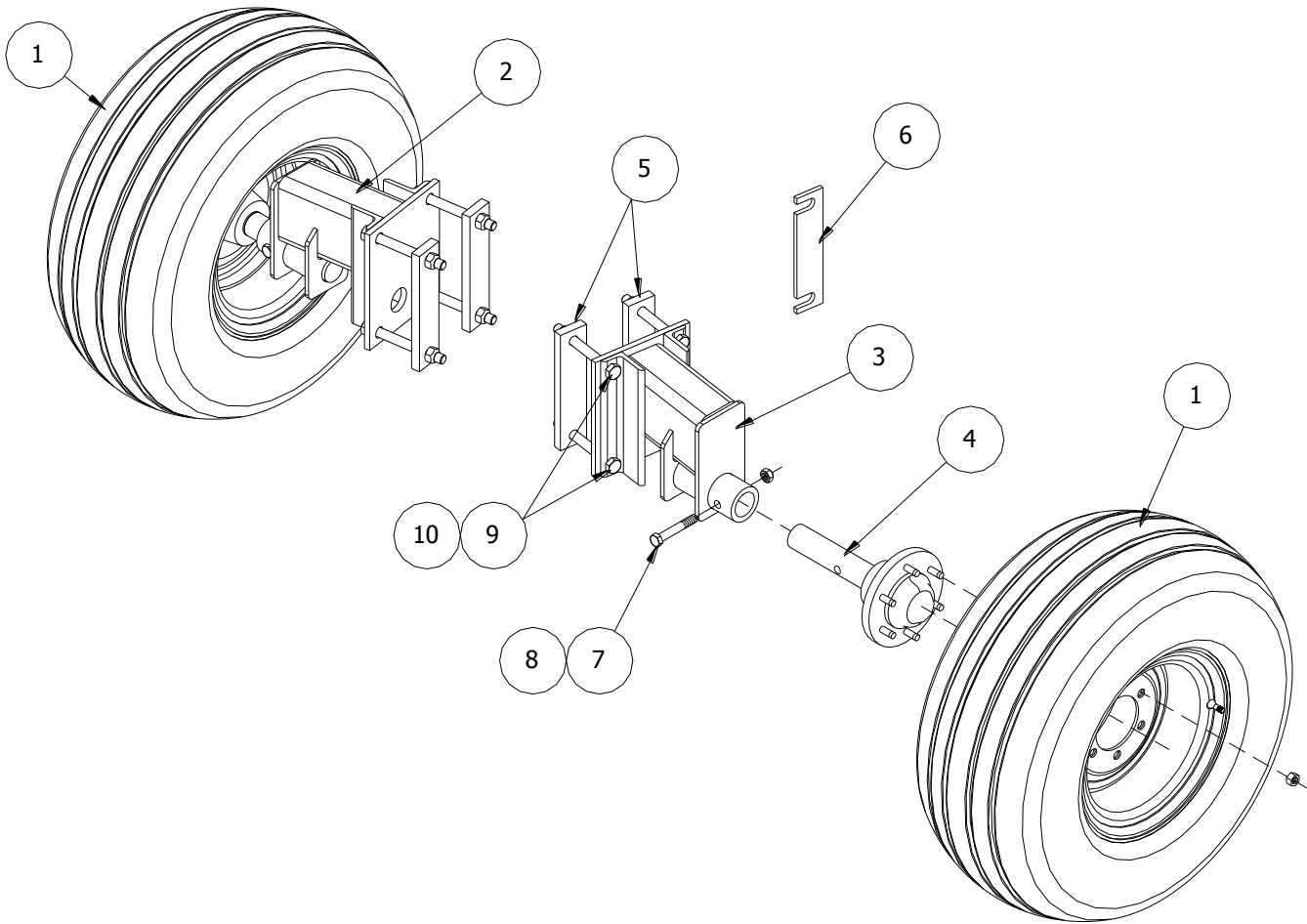
30' ROTARY HARROW

FRONT WING MOUNT AND BRACES



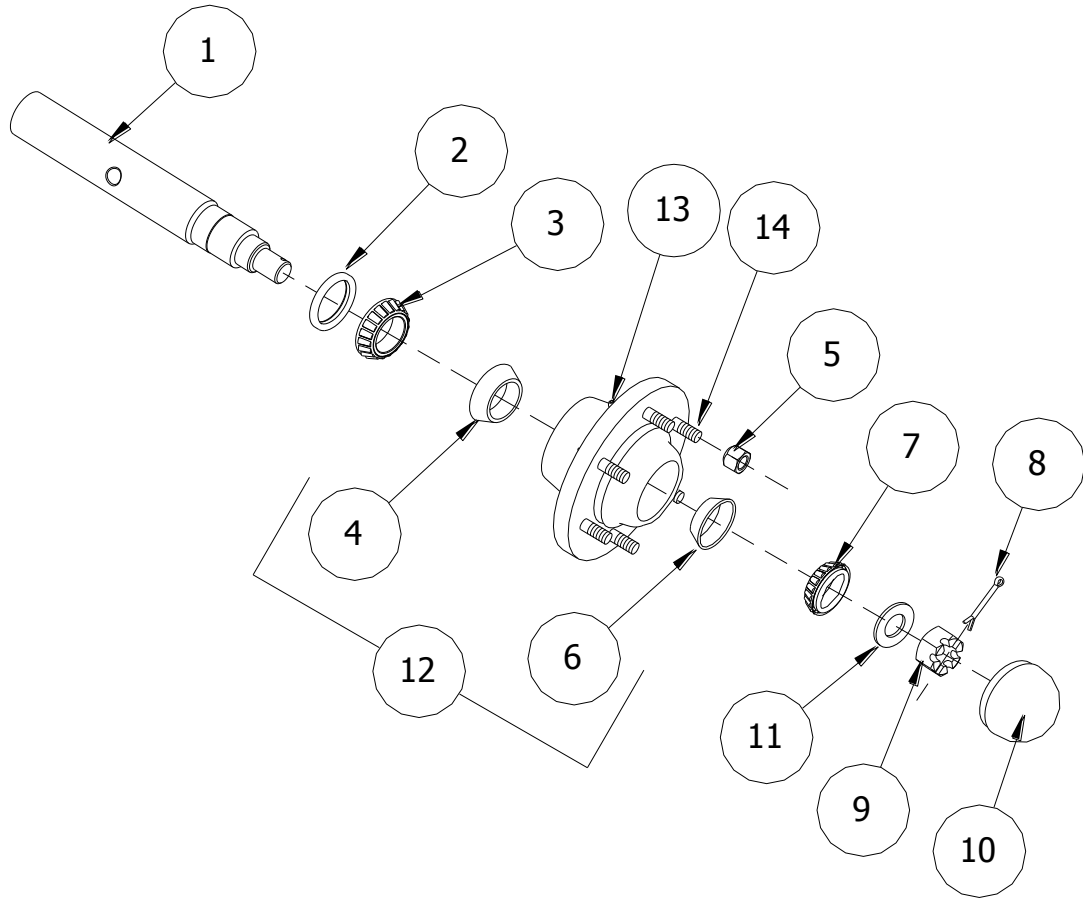
ITEM	PMF PART NO	KMC PART NO	DESCRIPTION	QTY
1	05-55006-01	61-080-003	FRONT WING MOUNT	1
2	05-55007-01	61-080-087	RH BRACE, FRONT WING MOUNT	1
3	05-55007-02	61-080-086	LH BRACE, FRONT WING MOUNT	1
4	05-51022-01	61-050-040	LOCK LEVER	2
5	31-10608-01	61-050-024	7/8 X 6 1/2 USEABLE HITCH PIN	2
6	31-50904-02	02-050-005	GREASE NIPPLE, 1/4 UNF	2
7	05-51055-01	61-026-021	GROOVED PIN, 1 X 3 1/2 PLT	2
8	31-50908-09	61-050-038	SHEET MACH. BUSH 1 1/2 OD X 1 ID X 10 GA	4
9	31-50907-03	61-050-037	1" HVY EXT. SNAP RING .078 THK	4
10	31-10946-17	61-050-027	U-BOLT, 3/4-10 X 7.25 X 18.4140EPL	2
11	31-50275-07	-	3/4 UNITORQUE NUT G8 PLT	4
12	31-10946-22	61-050-030	U-BOLT, 5/8 X 4 11/16W X 9 1/2L	4
13	31-50263-05	72-020050	5/8 UNC UNITORQUE NUT G8 PLT	16
14	31-10946-05	20-050-057	U-BOLT, 5/8 UNC X 4.68W X 5.25L	4

30' ROTARY HARROW
MAIN WHEEL ASSEMBLY



ITEM	PMF PART NO	KMC PART NO	DESCRIPTION	QTY
1	-	61-081-011	TIRE & WHEEL, 12.5L-15 (LOAD F)	2
2	05-51080-03	61-080-069	MAIN WHEEL MOUNT, R.H.	1
3	05-51080-04	61-080-070	MAIN WHEEL MOUNT, L.H.	1
4	30-90544-01	61-058-007	HUB AND SPINDLE ASSEMBLY	2
5	05-51071-01	61-023-061	MAIN WHEEL, BACK PLATE, 3/4 BOLTS	4
6	30-90376-17	-	SHIM WHEEL MOUNT	A/R
7	-	48-200032	CAPSCREW, 5/8 X 4 G8 PLT	2
8	-	72-020050	LOCKNUT, 5/8 STOVER G" C" PLT	2
9	31-50175-11	48-200063	3/4 X 7 UNC BOLT	8
10	31-50275-07	-	3/4 UNITORQUE NUT G8 PLT	8

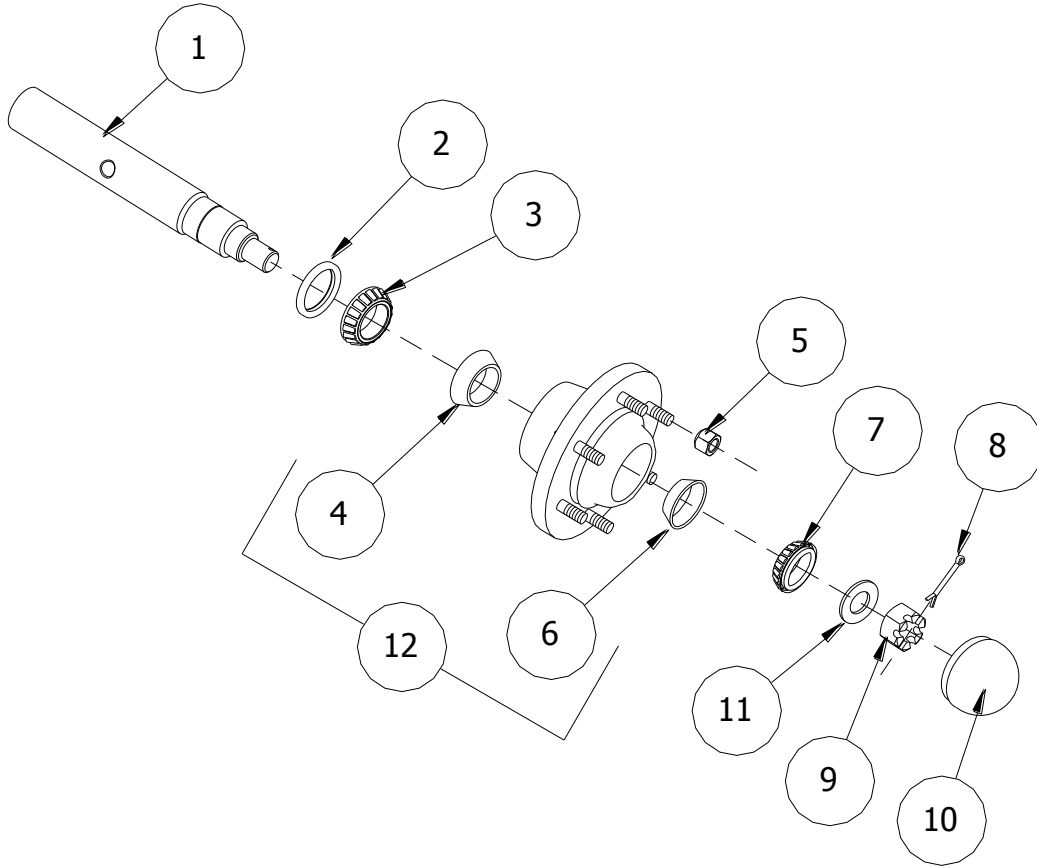
CTD MAIN WHEEL HUB AND SPINDLE ASSEMBLY



ITEM	PMF PART NO	KMC PART NO	DESCRIPTION	QTY
1	30-90540-12	-	SPINDLE, S614-A111	1
	30-90540-06	-	SPINDLE S614-A97SK FOR HARROW Pre 30TA-02031 may sub w/ 30-90540-10	1
2	31-50909-06	-	SE-16 GREASE SEAL	1
3	31-10210-07	-	BRG, CONE LM 603049	1
4	31-10210-05	-	BRG, CUP LM 603011	1
5	31-10901-04	-	WB-40 WHEEL NUT 9/16 - 18 UNF	6
6	31-10210-06	-	BRG CUP, LM 48510	1
7	31-10210-08	-	BRG CONE, LM 48548	1
8	31-50912-01	-	3/16 X 2 COTTER PIN, PLT	1
9	31-10909-03	-	WB-33 SPINDLE NUT, 1-14 UNS	1
10	31-10902-04	-	H614 DUST CAP (DC-15)	1
11	31-10909-01	-	WA-17 SPINDLE WASHER	1
12	31-10900-05	-	H614 HUB CASTING, C/W BRG CUPS	1
13	31-50904-12	-	GREASE NIPPLE, 1/4 UNF	1
14	31-10900-15	-	BOLT, 9/16 UNF X 2.25 WHEEL STUD	6

30' ROTARY HARROW

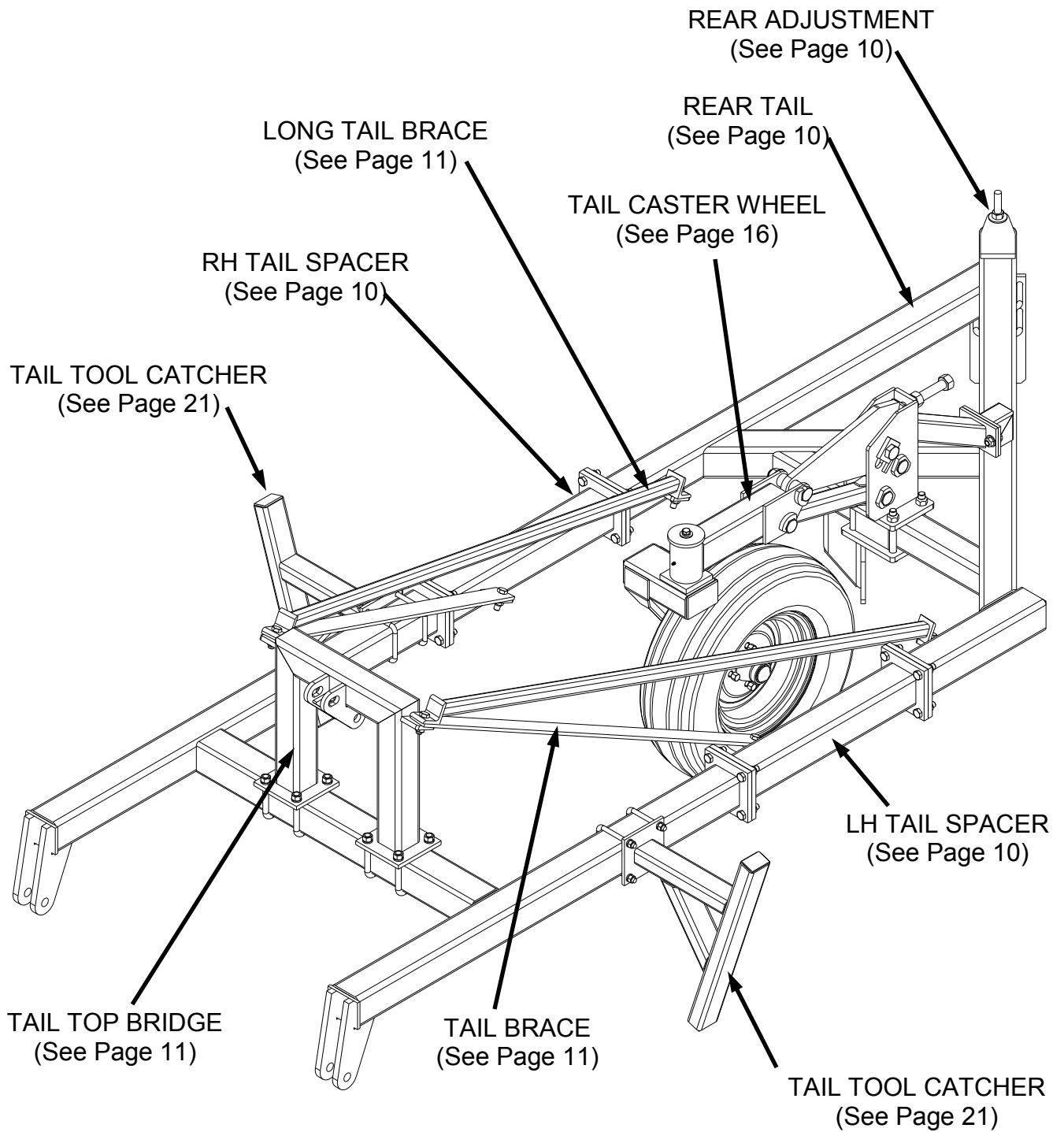
ELDALE MAIN WHEEL HUB AND SPINDLE ASSEMBLY



ITEM	PMFPART NO	KMC PART NO	DESCRIPTION	QTY
1	30-90540-10	-	SPINDLE, ELDALE, 614	1
2	31-50909-10	-	GREASE SEAL, ELDALE, 2"	1
3	31-10210-07	-	BRG, CONE LM 603049	1
4	31-10210-05	-	BRG, CUP LM 603011	1
5	31-10901-04	-	WB-40 WHEEL NUT 9/16 - 18 UNF	6
6	31-10210-06	-	BRG CUP, LM 48510	1
7	31-10210-08	-	BRG CONE, LM 48548	1
8	31-50912-01	-	3/16 X 2 COTTER PIN, PLT	1
9	31-10909-03	-	WB-33 SPINDLE NUT, 1-14 UNS	1
10	31-10902-07	-	DUST CAP, ELDALE, FOR 2 9/16"	1
11	31-10909-01	-	WA-17 SPINDLE WASHER	1
12	31-10900-10	-	HUB CASTING, C/W BRG CUPS	1

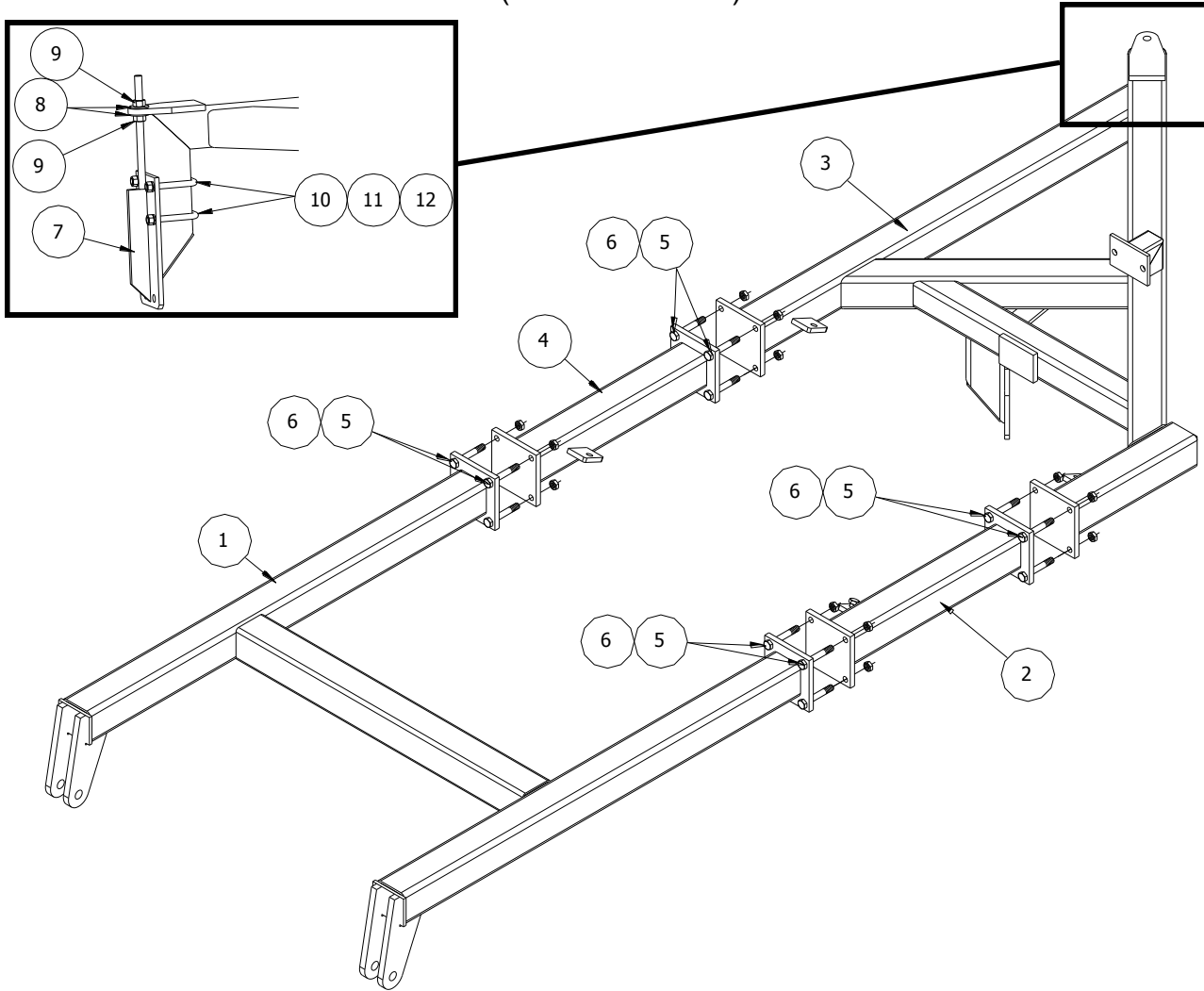
TAIL FRAME ASSEMBLY

(PRIOR TO 2007)



30' ROTARY HARROW

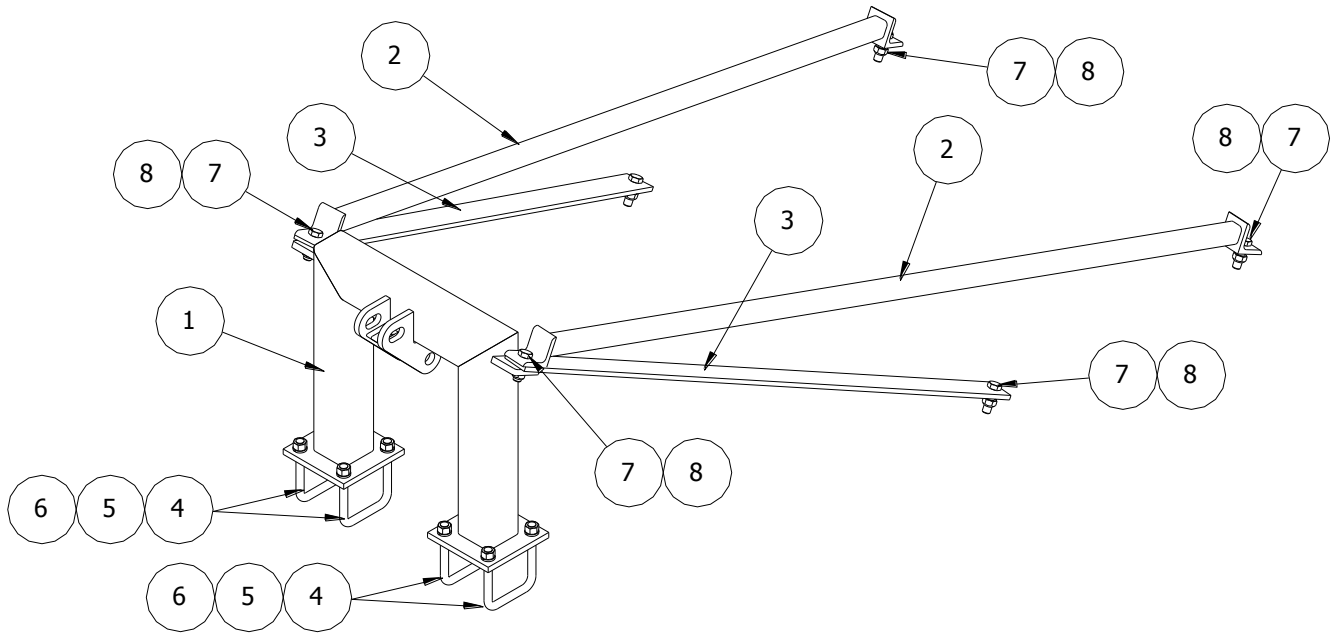
TAIL FRAME
(PRIOR TO 2007)



ITEM	PMF PART NO	KMC PART NO	DESCRIPTION	QTY
1	05-55011-01	-	FRONT TAIL	1
2	05-55012-01	-	LH TAIL SPACER	1
3	05-55013-01	-	REAR TAIL	1
4	05-55012-02	-	RH TAIL SPACER	1
5	31-50163-13	-	5/8 X 2 1/4 UNC BOLT	16
6	31-50263-05	-	5/8 UNC UNITORQUE NUT G8 PLT	16
7	05-51008-01	-	REAR ADJUST	1
8	31-50275-02	-	3/4 UNC HEX NUT, G8 PLT	2
9	31-50375-03	-	3/4 USS FLATWASHER, PLT	2
10	31-10946-05	-	U-BOLT, 5/8 UNC X 4.68W X 5.25L	2
11	31-50363-01	-	LOCKWASHER, 5/8 PLT	4
12	31-50263-01	-	HEX NUT, 5/8 PLT	4

30' ROTARY HARROW

TAIL TOP BRIDGE
(PRIOR TO 2007)

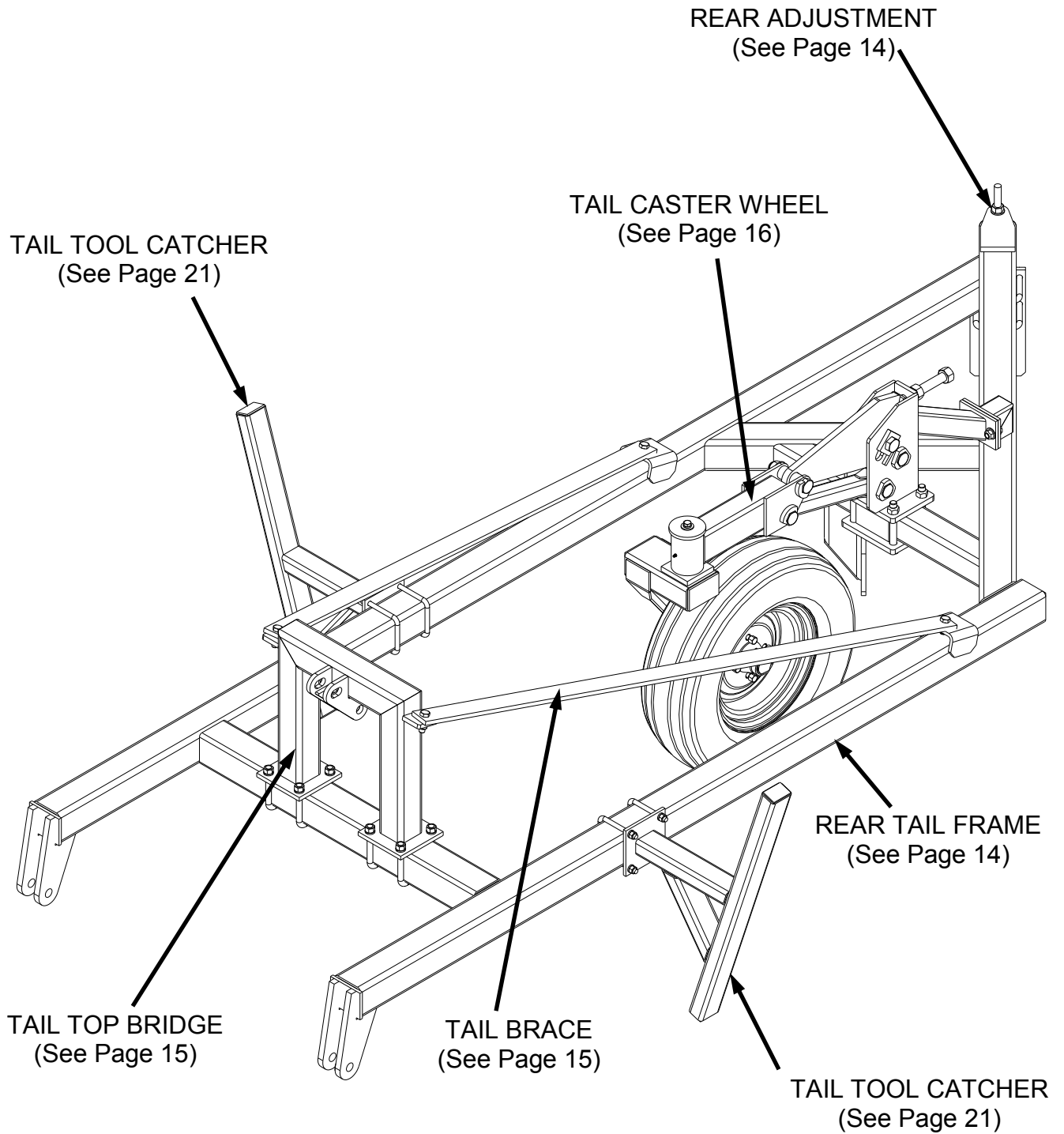


ITEM	PMF PART NO	KMC PART NO	DESCRIPTION	QTY
1	05-51039-01	-	TAIL TOP BRIDGE	1
2	05-55015-01	-	LONG TAIL BRACE	2
3	05-51009-01	-	TAIL BRACE	2
4	31-10946-05	-	U-BOLT , 5/8 UNC X 4.68W X 5.25L	4
5	31-50363-01	-	LOCKWASHER, 5/8 PLT	8
6	31-50263-01	-	HEX NUT, 5/8 PLT	8
7	31-50163-12	-	5/8 X 2 UNC BOLT	6
8	31-50263-05	-	5/8 UNC UNITORQUE NUT G8 PLT	6

30' ROTARY HARROW

TAIL FRAME ASSEMBLY

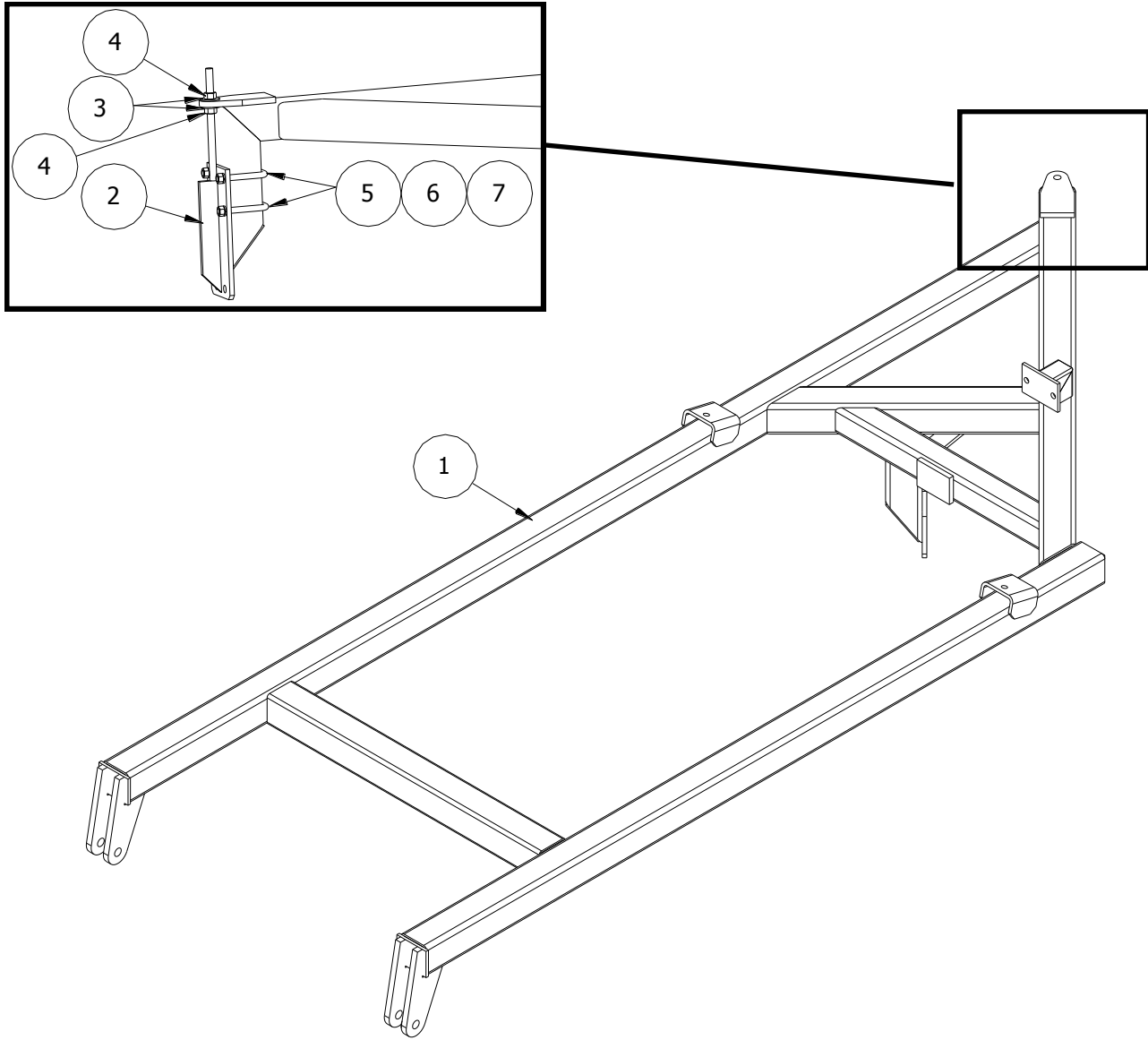
(2007 TO PRESENT)



30' ROTARY HARROW

TAIL FRAME

(2007 TO PRESENT)

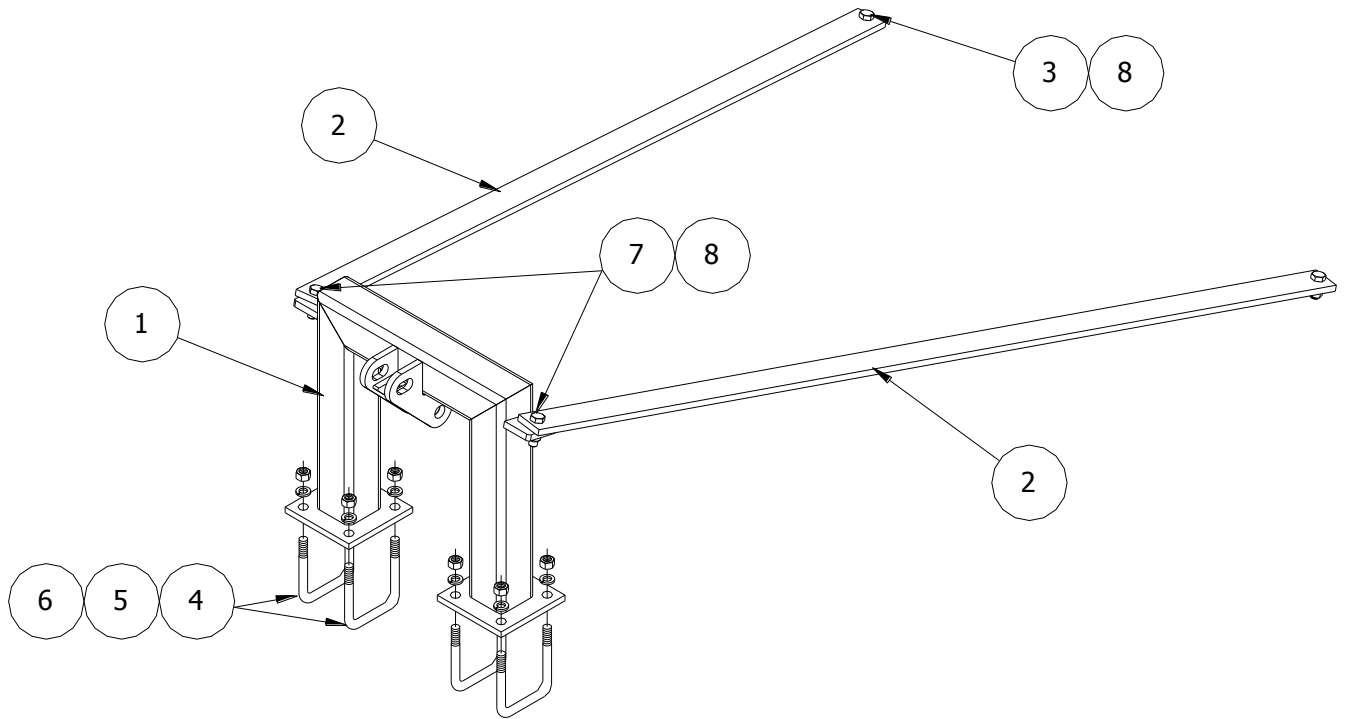


ITEM	PMF PART NO	KMC PART NO	DESCRIPTION	QTY
1	05-55013-01	61-080-015	TAIL WELDMENT 30FT	1
2	05-51008-01	61-080-037	REAR ADJUSTMENT	1
3	31-50375-03	62-020045	FLATWASHER, 3/4 SAE PLT	2
4	31-50275-02	68-010380	3/4 UNC HEX NUT, G8 PLT	2
5	31-10946-05	20-050-057	U-BOLT, 5/8 X 5 1/2 X 4 11/16	2
6	31-50363-01	66-010300	LOCKWASHER, 5/8 PLT	4
7	31-50263-01	68-010300	HEX NUT, 5/8 PLT	4

30' ROTARY HARROW

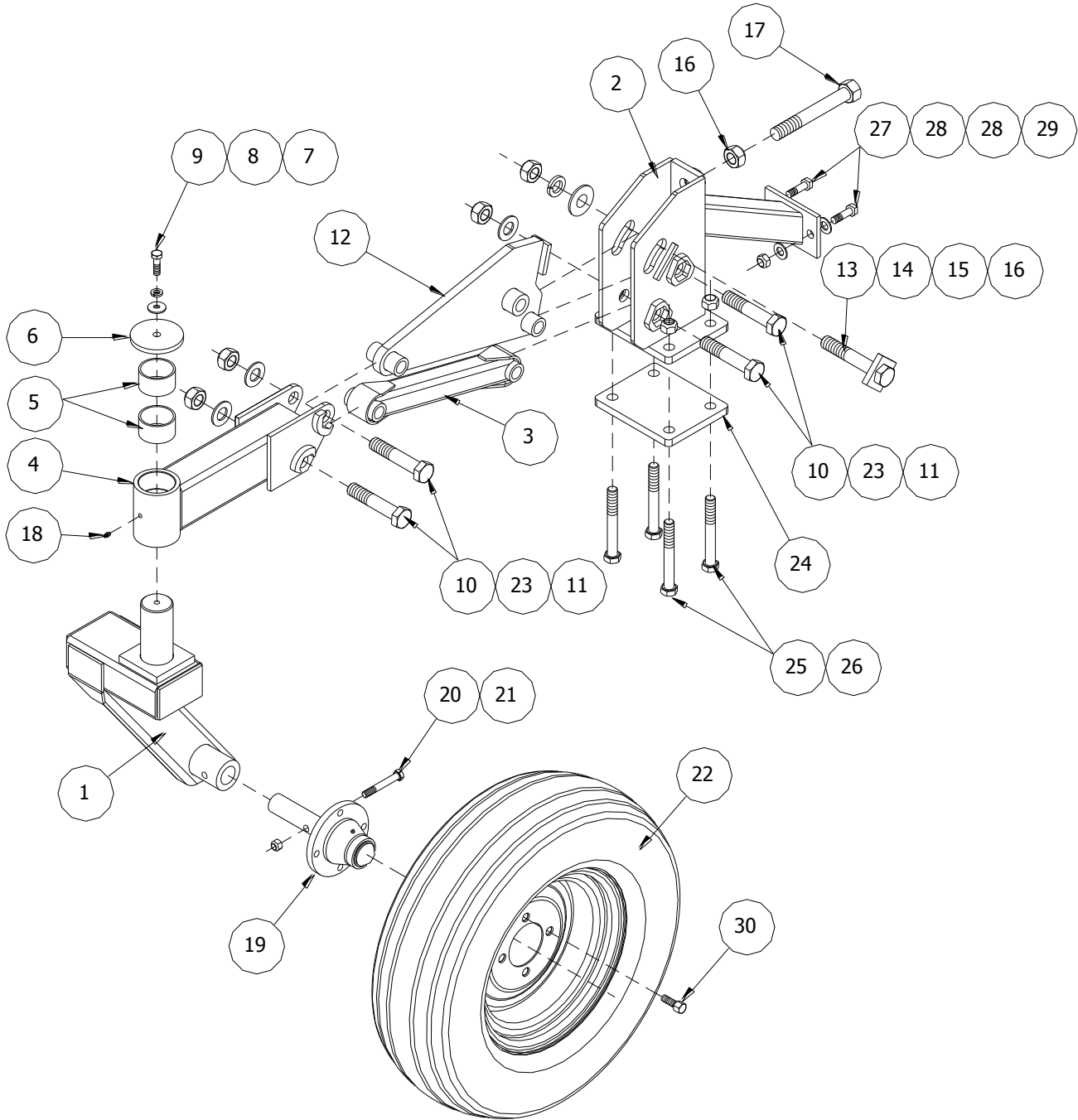
TAIL TOP BRIDGE

(2007 TO PRESENT)



ITEM	PMF PART NO	KMC PART NO	DESCRIPTION	QTY
1	05-51039-02	61-080-050	TAIL TOP BRIDGE	1
2	05-55015-01	61-023-009	STRAP, 30FT REAR	2
3	48-200042	48-200042	CAPSCREW, 5/8 X 1 1 /2 G8 PLT	2
4	31-10946-05	20-050-057	U-BOLT , 5/8 UNC X 4.68W X 5.25L	4
5	31-50363-01	66-010300	LOCKWASHER, 5/8 PLT	8
6	31-50263-01	68-010300	HEX NUT, 5/8 PLT	8
7	48-200029	48-200029	CAPSCREW, 5/8 X 2 G8 PLT	2
8	31-50263-05	72-020050	5/8 UNC UNITORQUE NUT G8 PLT	4

TAIL CASTER WHEEL ASSEMBLY



ITEM	PMF PART NO	KMC PART NO	DESCRIPTION	QTY
1	05-51040-01	61-080-023	SWIVEL, CASTER WHEEL	1
2	05-51094-01	61-080-024	CASTER BRACKET, WITH LOCKS & BRACE	1
3	05-51095-01	61-080-025	ARM, LOWER CASTER	1
4	05-51053-01	61-080-026	CASTER BUSHING ARM, WITH BOLT LOCKS	1
5	05-01873-01	61-050-013	CASTER BUSHING	2
6	05-01142-01	61-027-035	SPRING CAP, CASTER	1

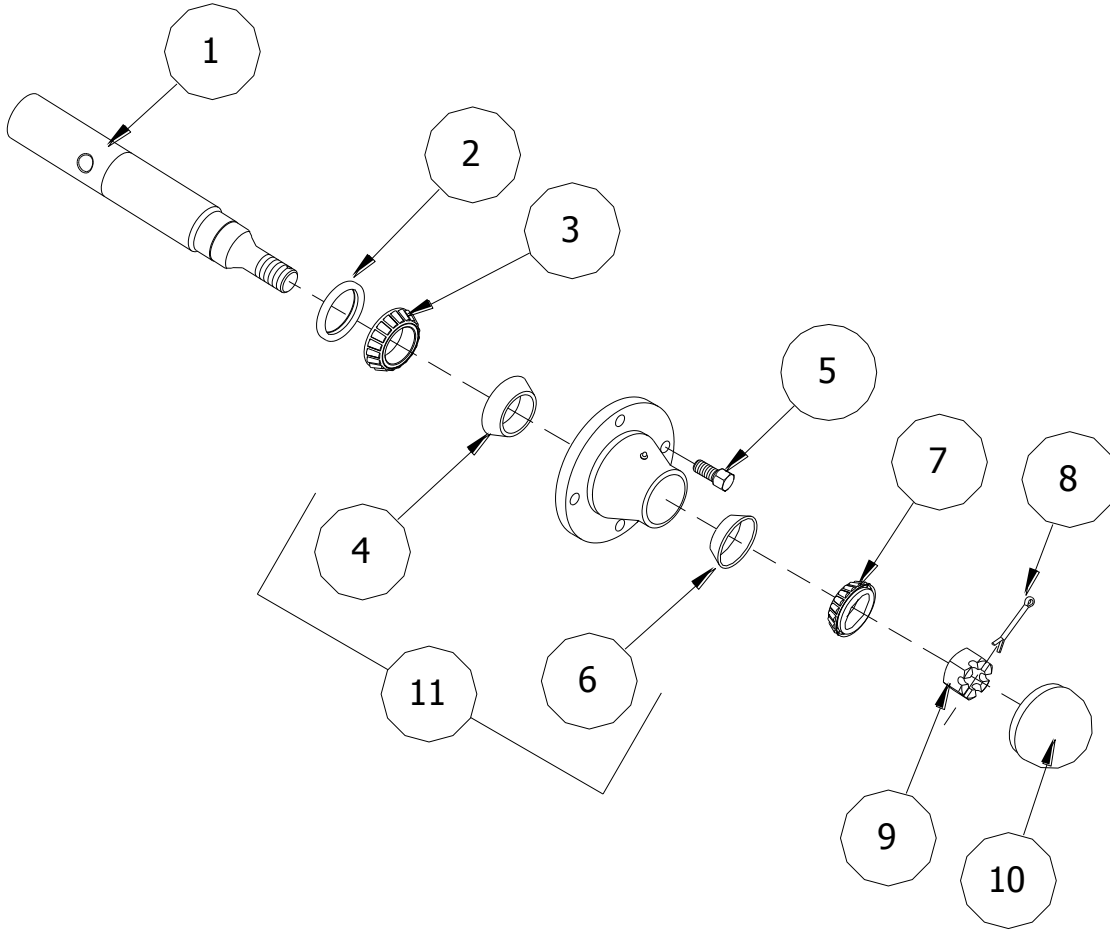
30' ROTARY HARROW

ITEM	PMF PART NO	KMC PART NO	DESCRIPTION	QTY
7	-	62-010200	FLATWASHER, 1/2 STD PLT	1
8	-	66-010250	LOCKWASHER, 1/2 REG PLT	1
9	-	48-090595	CAPSCREW, 1/2 X 1 1/2 NC G5 PLT	1
10	-	48-200350	CAPSCREW, 1 X 5 G8 PLT	4
11	31-50299-05	-	LOCKNUT, 1" NC STOVER G"C" PLT	4
12	05-51043-01	61-080-027	TAIL CASTER TOP ARM	1
13	05-51044-01	61-080-028	LOCK BOLT, CASTER WHEEL	1
14	31-50399-01	62-010370	FLATWASHER, 1" STD PLT	1
15	31-50399-02	66-010450	LOCKWASHER, 1" PLT	1
16	31-50299-02	68-010460	HEX NUT, 1" PLT	1
17	05-51061-01	61-080-029	HEIGHT ADJ BOLT, 2000 CASTER	1
18	31-50904-02	02-050-005	FITTING, 1/4-28 STRT. GREASE	1
19	30-90546-01	61-058-006	HUB AND SPINDLE ASSY 4-BOLT	1
20	31-50150-08	48-200255	CAPSCREW, 1/2 X 3 1/2 UNC G8 PLT	1
21	31-50250-05	72-020127	LOCKNUT, 1/2 NC STOVER G"C" PLT	1
22	05-51048-01	61-081-030	27 X 7.5 X 14 TIRE & ASSY	1
	-	61-050-006	STEM, (TR413) VALVE	1
23	31-50399-03	62-020050	FLATWASHER, 1 SAE PLT	4
24	30-90375-09	-	BOTTOM PLATE, CASTER BRACKET	1
25	31-50175-09	-	CAPSCREW, 3/4 X 6 NC G8 PLT	4
26	-	72-020128	LOCKNUT, 3/4 STOVER G"C" PLT	4
27	31-50163-14	48-200042	5/8 X 1 1/2 CAPSCREW	2
28	31-50363-02	62-020040	5/8 SAE FLATWASHER, PLT	4
29	31-50263-05	72-020050	LOCKNUT, 5/8 NC STOVER G"C" PLT	2
30	31-10901-03	-	WHEEL BOLT, 1/2-20 UNF	4

COLD INFLATION PRESSURES FOR 30' HARROWS

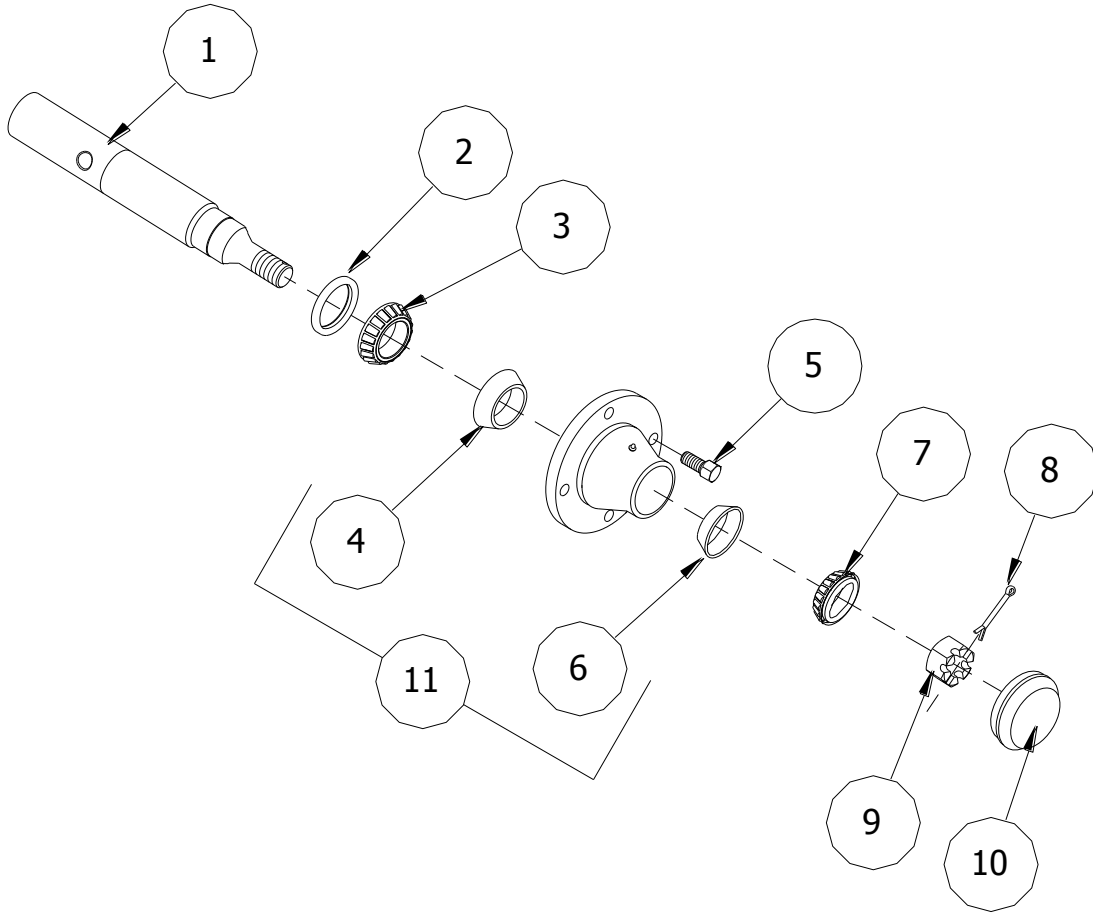
TIRE SIZE	TRANSPORT	FIELD USE	FIELD USE WITH GRANULAR APPLICATOR	TRANSPORT WITH GRANULAR APPLICATOR
12.5L X 15 (F-PLY) (Main Wheels)	40 PSI MIN.	25 PSI MIN.	30 PSI MIN.	55 PSI MIN.
7.5 x 14 (Caster Wheels)	N/A	20 PSI MIN. 22 PSI MIN.	20 PSI MIN. 22 PSI MIN.	N/A

CTD CASTER WHEEL HUB AND SPINDLE ASSEMBLY



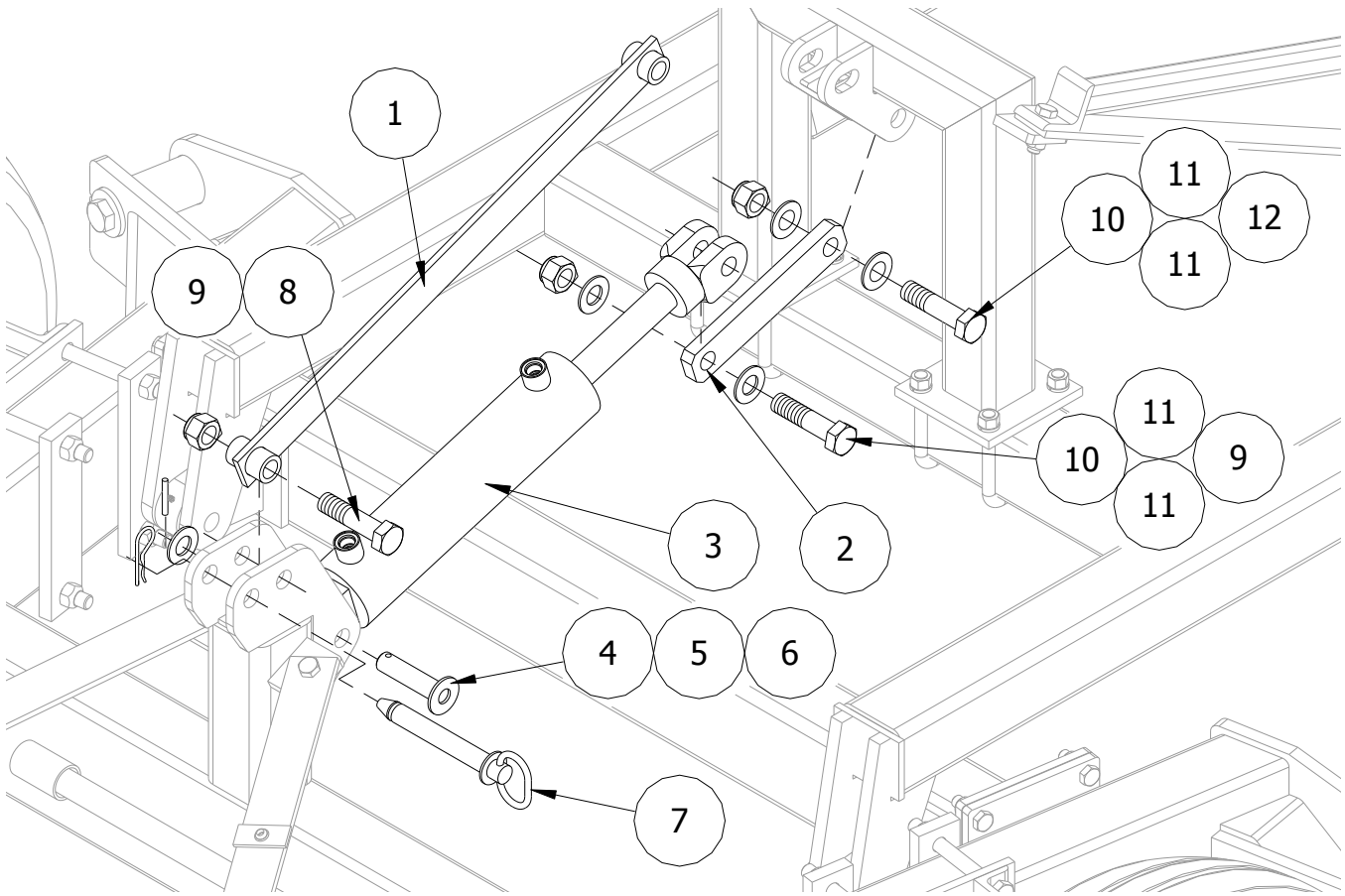
ITEM	PMF PART NO	KMC PART NO	DESCRIPTION	QTY
1	30-90540-07	-	SPINDLE, S411-A71SK HARROW	1
2	31-50909-08	-	SE-11 GREASE SEAL	1
3	31-10210-12	-	BRG, CONE LM 67048	1
4	31-10210-10	-	BRG, CUP LM 67010	1
5	31-10901-03	-	WB-10 WHEEL BOLT 1/2 - 20UNF	4
6	31-10210-02	-	BRG CUP, LM 11910	1
7	31-10210-04	-	BRG CONE, LM 11949	1
8	31-50912-02	-	3/16 X 1 1/2 COTTER PIN, PLT	1
9	31-10909-02	-	WB-30 SPINDLE NUT FOR 411 HUB	1
10	31-10902-06	-	DC-12 DUST CAP FOR 411 HUB	1
11	31-10900-07	-	H411 HUB CASTING, C/W BRG CUPS	1

ELDALE CASTER WHEEL HUB AND SPINDLE ASSEMBLY



ITEM	PMF PART NO	KMC PART NO	DESCRIPTION	QTY
1	30-90540-11	-	SPINDLE, ELDALE, 411	1
2	31-50909-08	-	SE-11 GREASE SEAL	1
3	31-10210-12	-	BRG, CONE LM 67048	1
4	31-10210-10	-	BRG, CUP LM 67010	1
5	31-10901-03	-	WB-10 WHEEL BOLT 1/2 - 20UNF	4
6	31-10210-02	-	BRG CUP, LM 11910	1
7	31-10210-04	-	BRG CONE, LM 11949	1
8	31-50912-02	-	3/16 X 1 1/2 COTTER PIN, PLT	1
9	31-10909-02	-	WB-30 SPINDLE NUT FOR 411 HUB	1
10	31-10902-08	-	DUST CAP, ELDALE, FOR 2" BORE	1
11	31-10900-09	-	HUB CASTING, CW BRG CUPS	1

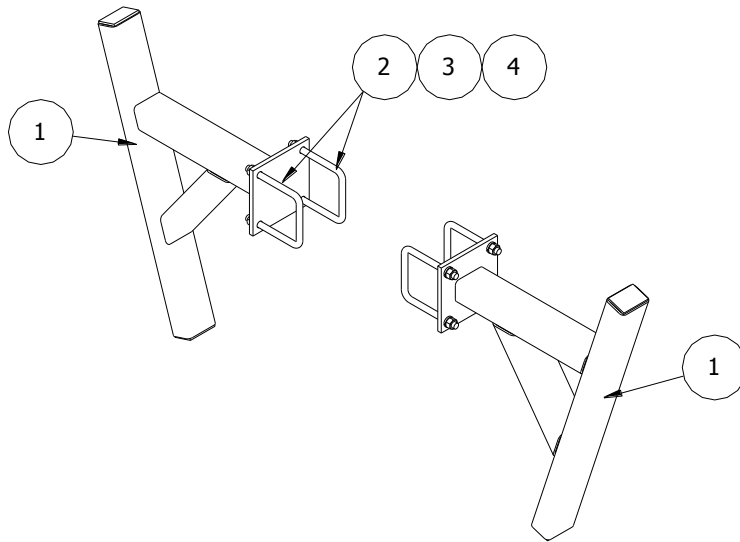
30' ROTARY HARROW
TAIL LOCK ASSEMBLY



ITEM	PMF PART NO	KMC PART NO	DESCRIPTION	QTY
1	05-55031-01	61-080-017	TAIL LOCK	1
2	05-51012-01	61-023-060	TAIL LEVER	1
3	31-10520-01	61-061-015	3.5 X 12 STROKE CYLINDER, (-2013)	(1)
	-	61-061-023	3.5 X 12 STROKE CYLINDER, (2014-)	1
4	05-51049-01	61-080-060	PLATED PIN, 1 X 4 1/8	1
5	31-50399-03	62-020050	1" SAE FLATWASHER, PLT	1
6		76-0010200	COTTER PIN, 1/4 X 2	1
7	31-10608-01	61-050-024	7/8 X 6 1/2 USEABLE HITCH PIN	1
8	-	48-200120	1" X 5" CAPSCREW, G8 PLT	1
9	-	72-010140	1" NYLON INSERT LOCKNUT G8 PLT	2
10	31-50199-01	48-200300	1" X 4" CAPSCREW G8 PLT	2
11	31-50399-04	61-050-036	1" UHMW FLATWASHER	4
12	31-50299-05	72-030100	1 TOPLOCK LOCKNUT G8 PLT	1

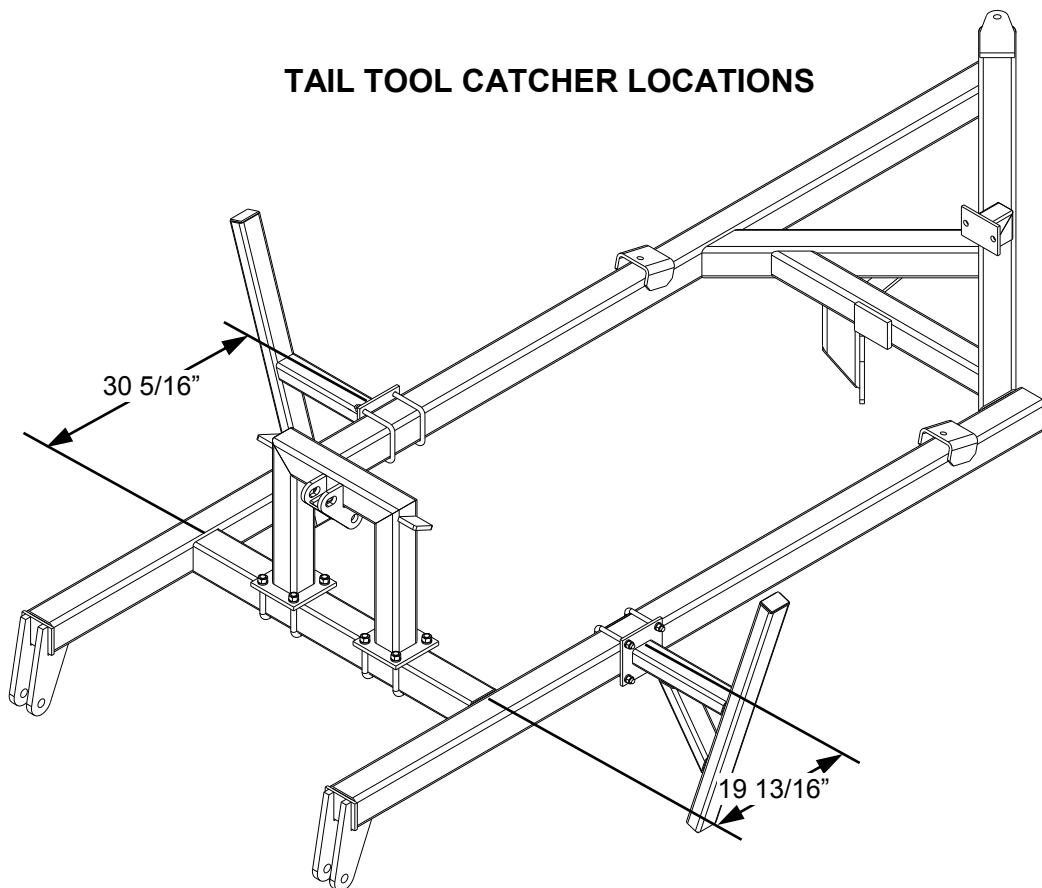
30' ROTARY HARROW

TAIL TOOL CATCHER

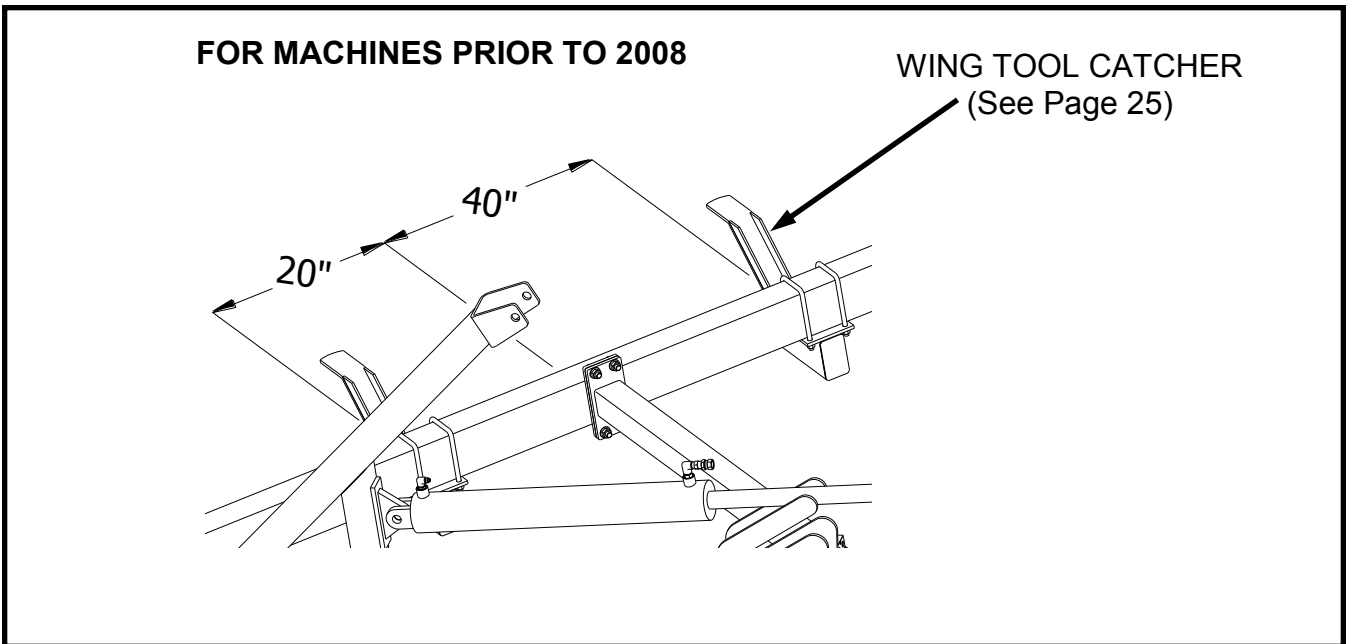
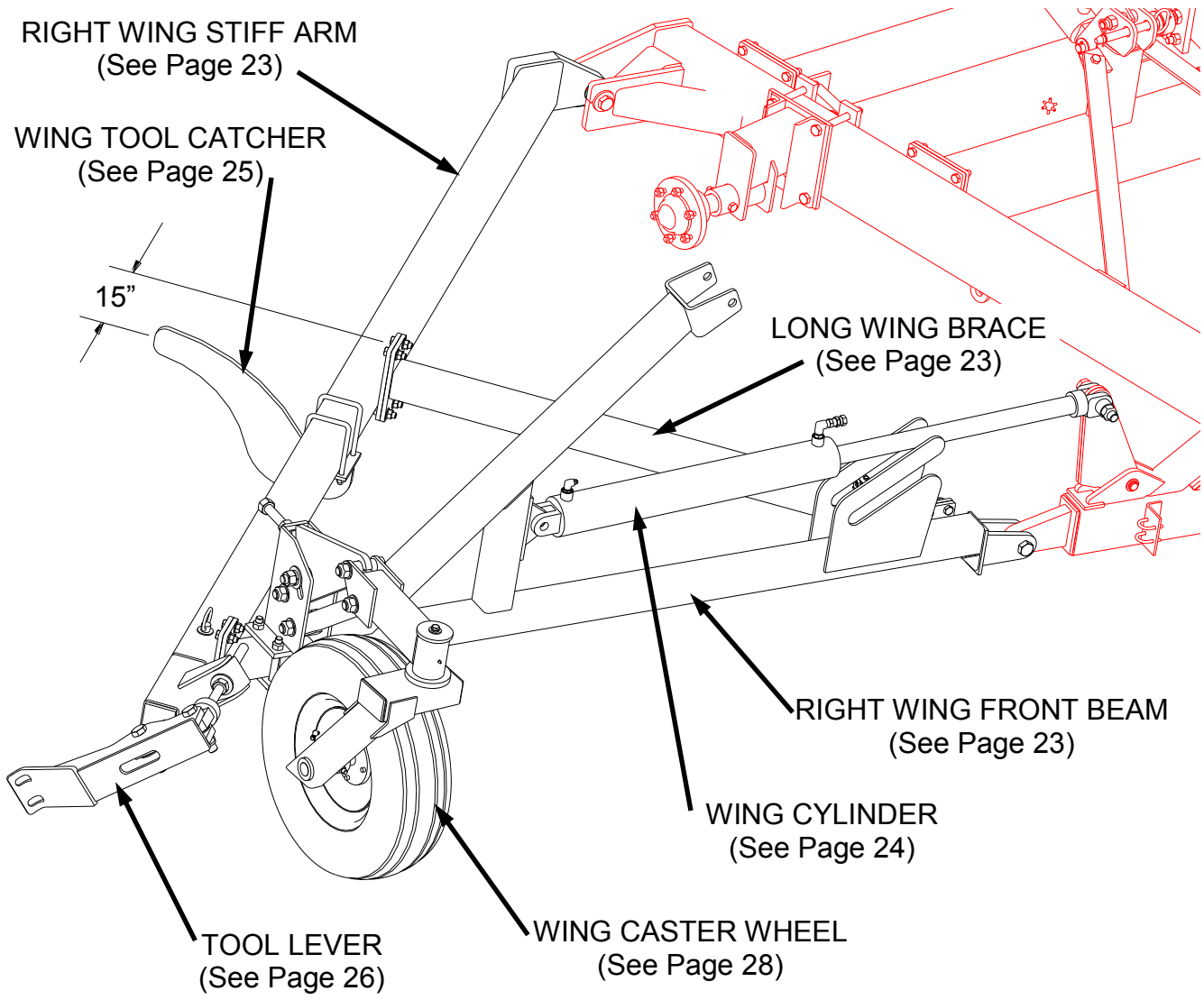


ITEM	PMF PART NO	KMC PART NO	DESCRIPTION	QTY
1	05-51035-01	61-080-048	TAIL TOOL CATCHER	2
2	31-10946-18	61-050-028	U-BOLT, 1/2 X 4 9/16W X 5 1/4L	4
3	31-50250-01	68-010250	1/2 UNC HEX NUT PLT	8
4	31-50350-01	66-010250	1/2 LOCKWASHER, PLT	8

TAIL TOOL CATCHER LOCATIONS

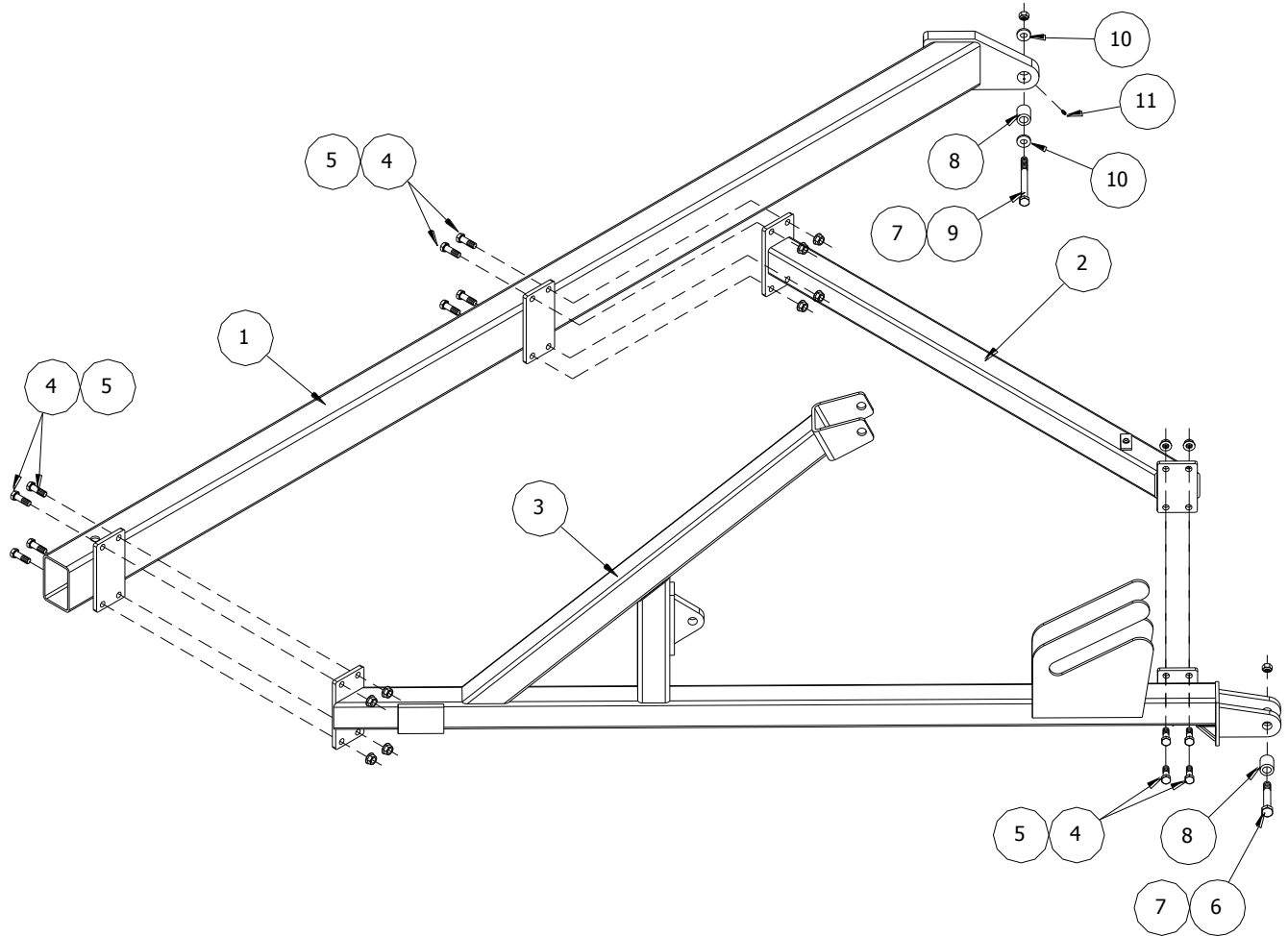


RIGHT MAIN WING ASSEMBLY



30' ROTARY HARROW

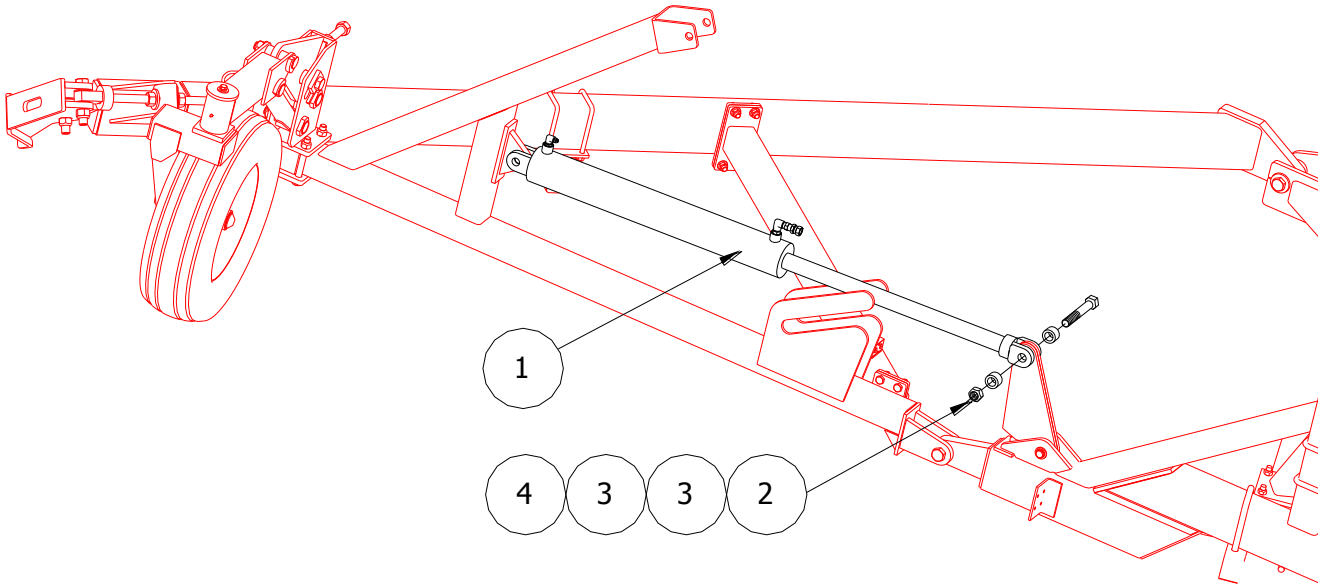
RIGHT MAIN WING FRAME



ITEM	PMF PART NO	KMC PART NO	DESCRIPTION	QTY
1	05-55016-01	61-080-002	RIGHT WING STIFF ARM	1
2	05-55018-01	-	LONG WING BRACE	1
3	05-55014-01	-	RIGHT WING FRONT BEAM	1
4	31-50163-12	48-200029	5/8 X 2 UNC BOLT	12
5	-	68-010320	NUT, 5/8 TECHLOCK FLANGE GRD "G"	12
6	31-50199-03	48-200325	1 X 4 1/2 HX HD BOLT	1
7	31-50299-05	72-030100	1" UNITORQUE NUT G8 PLT	2
8	05-51011-01	-	BUSHING LONG	2
9	31-50199-07	-	1" X 7" HX HD BOLT G8 PLT	1
10	05-01648-01	61-050-012	WASHER, THRUST - UHMW	2
11	31-50904-02	02-050-005	GREASE NIPPLE, 1/4 UNF	1

30' ROTARY HARROW

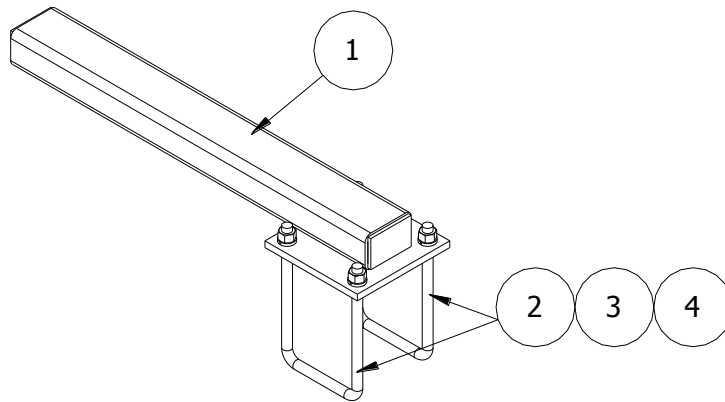
WING CYLINDER HARDWARE



ITEM	PMF PART NO	KMC PART NO	DESCRIPTION	QTY
1	31-10517-04	61-061-014	4 X 30 HYDRAULIC CYLINDER (-2013)	(1)
	-	61-061-027	4 X 30 HYDRAULIC CYLINDER (2014-)	1
2	-	48-200500	CAPSCREW, 1 X 6 1/2 G8 PLT	1
3	05-51013-01	61-024-041	LEVER GUIDE, PLT	2

RIGHT WING SHOWN, LEFT WING SAME HARDWARE.

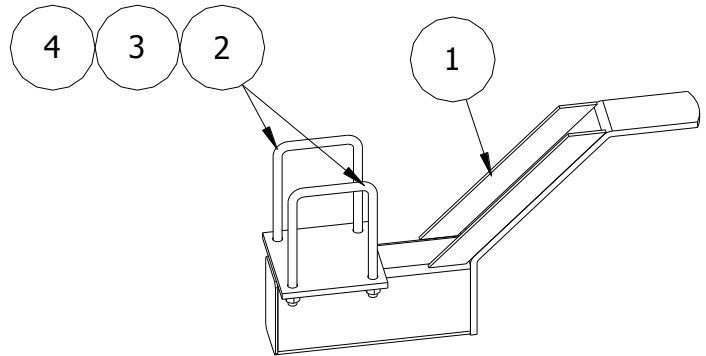
**WING TOOL CATCHER (PRIOR TO 2007)
(2 PER MACHINE)**



ITEM	PMF PART NO	KMC PART NO	DESCRIPTION	QTY
1	05-51036-01	-	WING TOOL CATCHER	1
2	31-10946-19	-	U-BOLT, 1/2 X 4 9/16W X 7 1/4L	2
3	31-50350-01	-	LOCKWASHER, 1/2	4
4	31-50250-01	-	HEX NUT, 1/2	4

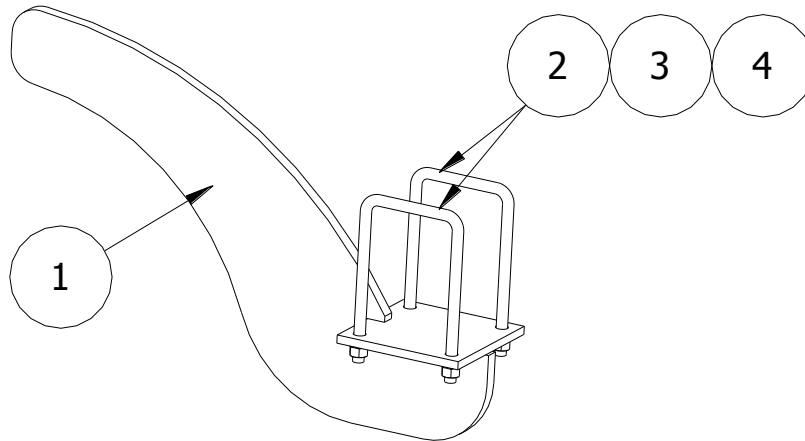
**WING TOOL CATCHER (2007)
(4 PER MACHINE)**

**NOTE: 61-080-053 WILL REPLACE
61-080-014 FOR REPAIR PARTS**



ITEM	PMF PART NO	KMC PART NO	DESCRIPTION	QTY
1	05-51036-01	61-080-014	WING TOOL CATCHER	1
2	31-10946-19	-	U-BOLT, 1/2 X 4 9/16W X 7 1/4L	2
3	-	66-010250	LOCKWASHER, 1/2	4
4	-	68-010250	HEX NUT, 1/2	4

**WING TOOL CATCHER (2008 TO PRESENT)
(2 PER MACHINE)**

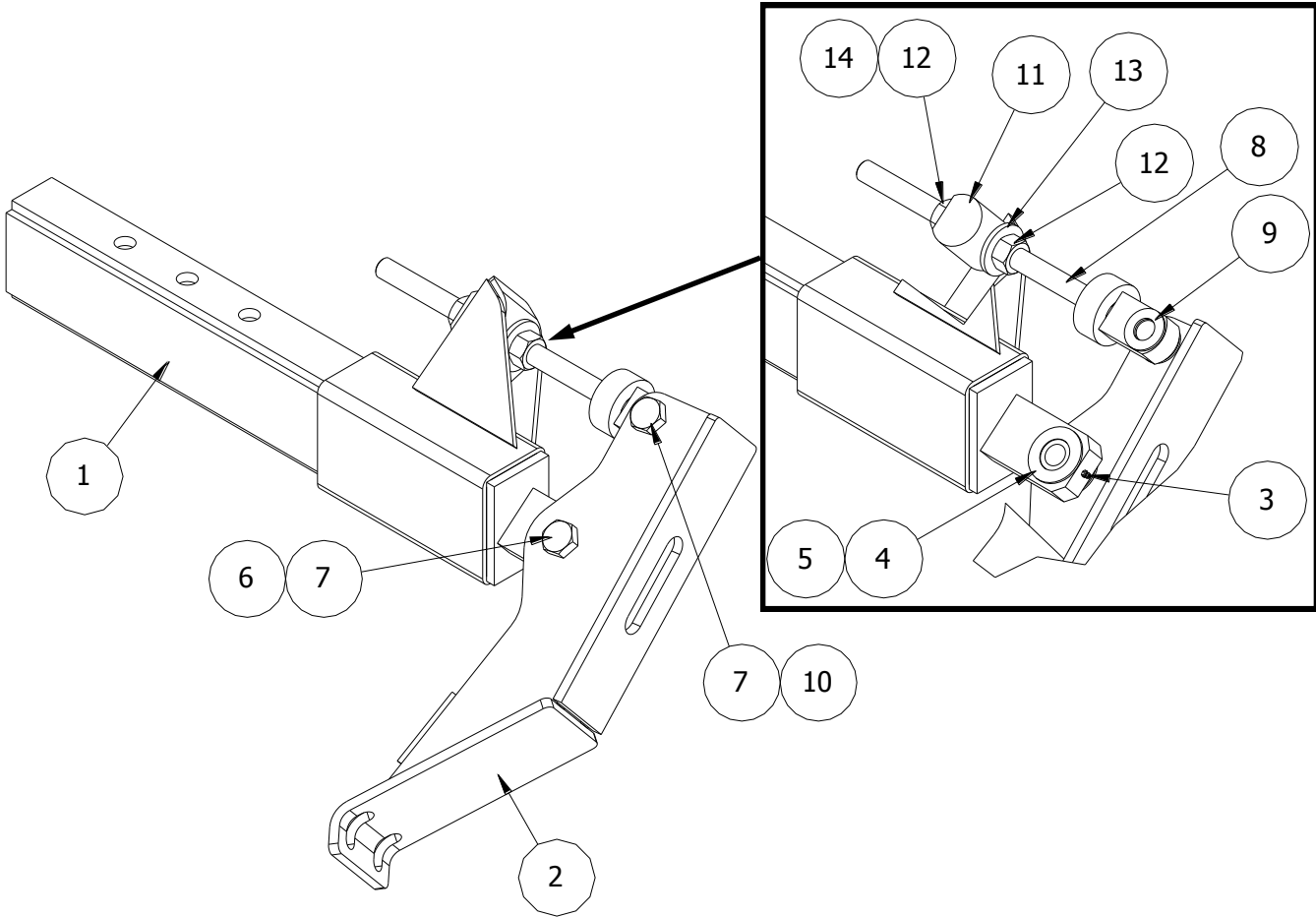


ITEM	PMF PART NO	KMC PART NO	DESCRIPTION	QTY
1	-	61-080-053	WING TOOL CATCHER	1
2	31-10946-19	-	U-BOLT, 1/2 X 4 9/16W X 7 1/4L	2
3	-	66-010250	LOCKWASHER, 1/2	4
4	-	68-010250	HEX NUT, 1/2	4

30' ROTARY HARROW

RIGHT TOOL TENSIONER EXTENSION

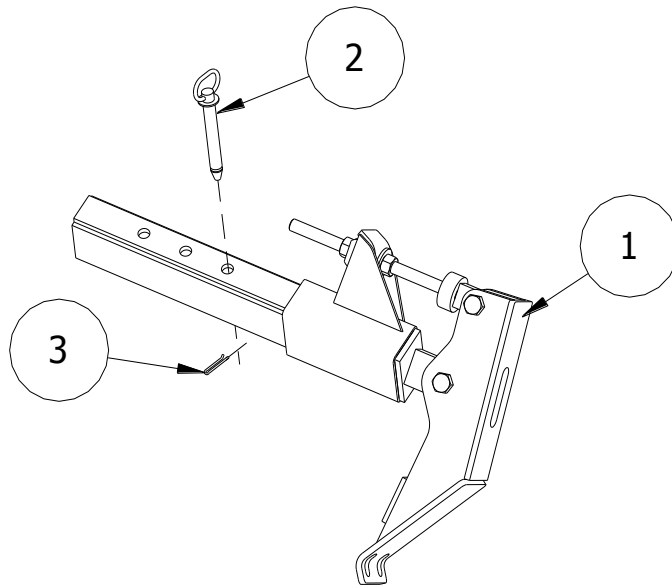
(61-081-003)



ITEM	PMF PART NO	KMC PART NO	DESCRIPTION	QTY
1	05-51121-00	61-080-080	RH WING EXTENSION	1
2	05-51097-00	61-080-071	TOOL LEVER, LONG STROKE	1
3	-	02-050-005	FITTING, 1/4-28 GREASE	1
4	05-01648-01	61-050-012	THRUST WASHER	2
5	05-01646-01	61-026-023	BUSHING, HARDENED	1
6	31-50299-05	-	LOCKNUT, 1 STOVER G"C" PLT	1
7	-	48-200350	CAPSCREW, 1 X 5 G8 PLT	2
8	05-51098-00	61-080-072	TENSION ROD, LONG STROKE, PLT	1
9	31-50399-04	61-050-036	1" PLASTIC WASHER	2
10	-	72-010140	LOCKNUT, 1 NYLON	1
11	71-51004-00	61-026-025	BUSHING, TENSION ROD	1
12	-	68-010460	HEX NUT, 1 G8 PLT	1
13	71-51003-00	61-050-039	WASHER, ROD SUPPORT	1
14	-	62-020075	WASHER, 1 HARDENED SAE PLT	1

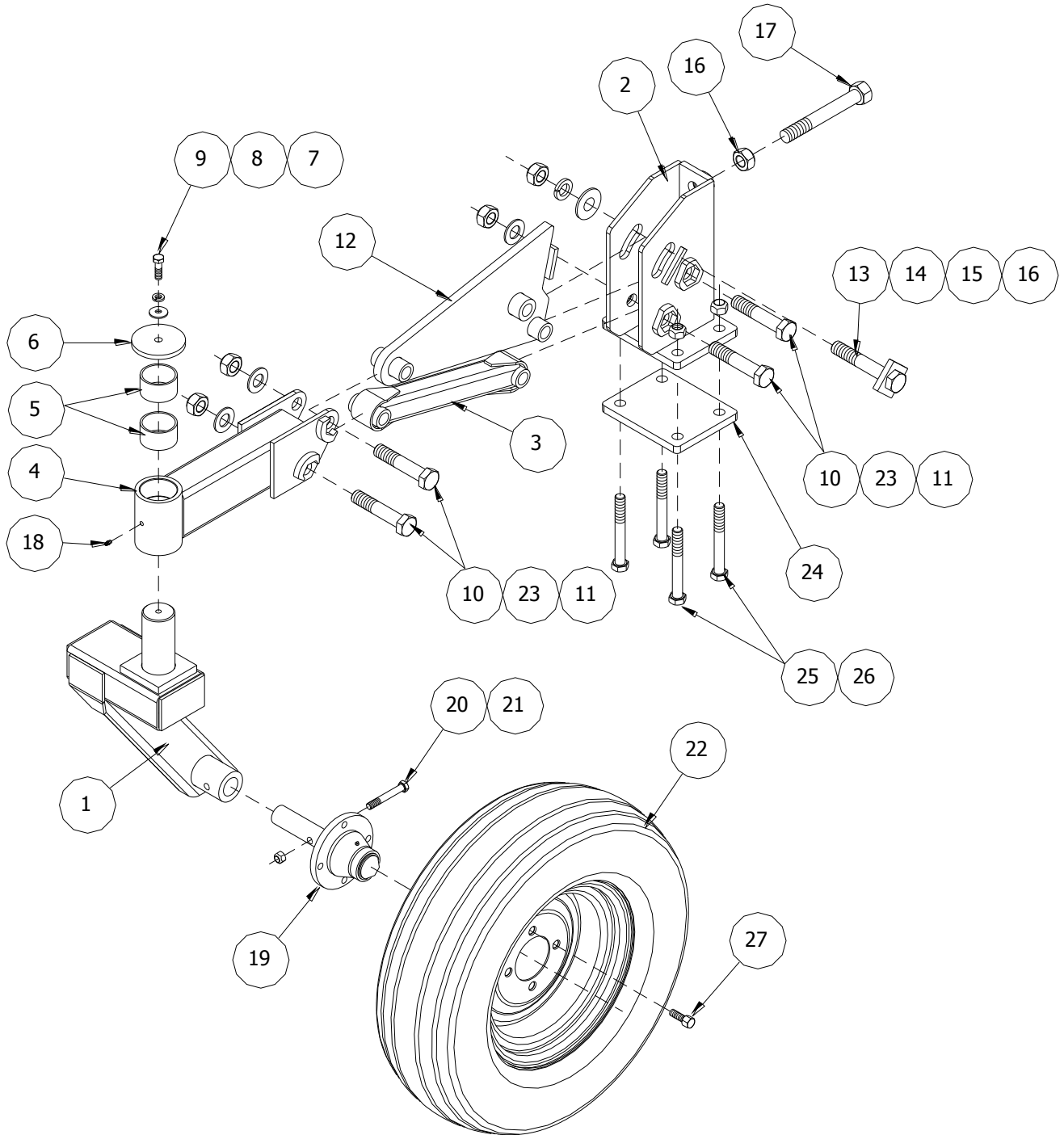
30' ROTARY HARROW

RIGHT TOOL TENSIONER



ITEM	PMF PART NO	KMC PART NO	DESCRIPTION	QTY
1	-	61-081-003	EXTENSION, RT TOOL TENSIONER	1
2	31-10608-01	61-050-024	PIN, 7/8" X 6.5" USBL HITCH	1
3	-	76-010200	COTTER PIN, 1/4 X 2	1

WING CASTER WHEEL ASSEMBLY



ITEM	PMF PART NO	KMC PART NO	DESCRIPTION	QTY
1	05-51040-01	61-080-023	SWIVEL, CASTER WHEEL	1
2	05-51054-01	61-080-030	CASTER BRACKET, WITH LOCKS	1
3	05-51095-01	61-080-025	ARM, LOWER CASTER	1
4	05-51053-01	61-080-026	CASTER BUSHING ARM, WITH BOLT LOCKS	1
5	05-01873-01	61-050-013	CASTER BUSHING	2
6	05-01142-01	61-027-035	SPRING CAP, CASTER	1

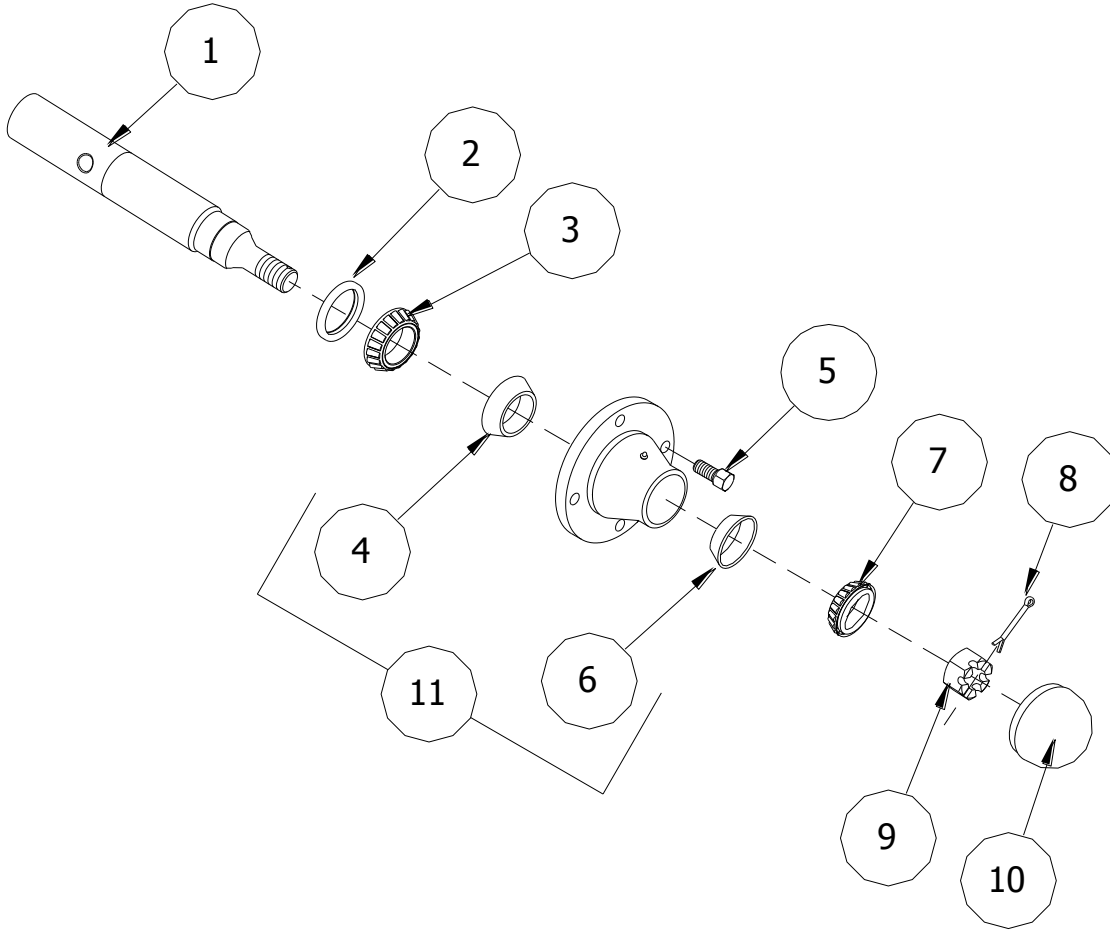
30' ROTARY HARROW

ITEM	PMF PART NO	KMC PART NO	DESCRIPTION	QTY
7	31-50350-02	62-010200	FLATWASHER, 1/2 STD PLT	1
8	31-50350-01	66-010250	LOCKWASHER, 1/2 REG PLT	1
9	31-50150-03	48-090595	CAPSCREW, 1/2 X 1 1/2 NC G5 PLT	1
10	31-50199-05	48-200350	CAPSCREW, 1 X 5 G8 PLT	4
11	31-50299-05	-	LOCKNUT, 1" NC STOVER G"C" PLT	4
12	05-51042-01	61-080-031	UPPER ARM, CASTER WHEEL	1
13	05-51044-01	61-080-028	LOCK BOLT, CASTER WHEEL	1
14	31-50399-01	62-010370	FLATWASHER, 1" STD PLT	1
15	31-50399-02	66-010450	LOCKWASHER, 1" PLT	1
16	31-50299-02	68-010460	HEX NUT, 1" PLT G8	2
17	05-51061-01	61-080-029	HEIGHT ADJ BOLT, 2000 CASTER	1
18	31-50904-02	02-050-005	FITTING, 1/4-28 STRT. GREASE	1
19	30-90546-01	61-058-006	HUB AND SPINDLE ASSY 4-BOLT	1
20	31-50150-08	48-200255	CAPSCREW, 1/2 X 3 1/2 UNC G8 PLT	1
21	31-50250-05	72-020127	LOCKNUT, 1/2 NC STOVER G"C" PLT	1
22	05-51048-01	61-081-030	27 X 7.5 X 14 TIRE & ASSY	1
	-	61-050-006	STEM, (TR413) VALVE	1
23	31-50399-03	62-020050	FLATWASHER, 1 SAE PLT	4
24	30-90376-09	61-023-023	BOTTOM PLATE, CASTER BRACKET	1
25	31-50175-09	-	CAPSCREW, 3/4 X 6 NC G8 PLT	4
26	-	72-020128	LOCKNUT, 3/4 STOVER G"C" PLT	4
27	31-10901-03	-	WHEEL BOLT, 1/2-20 UNF	4

COLD INFLATION PRESSURES FOR 30' HARROWS

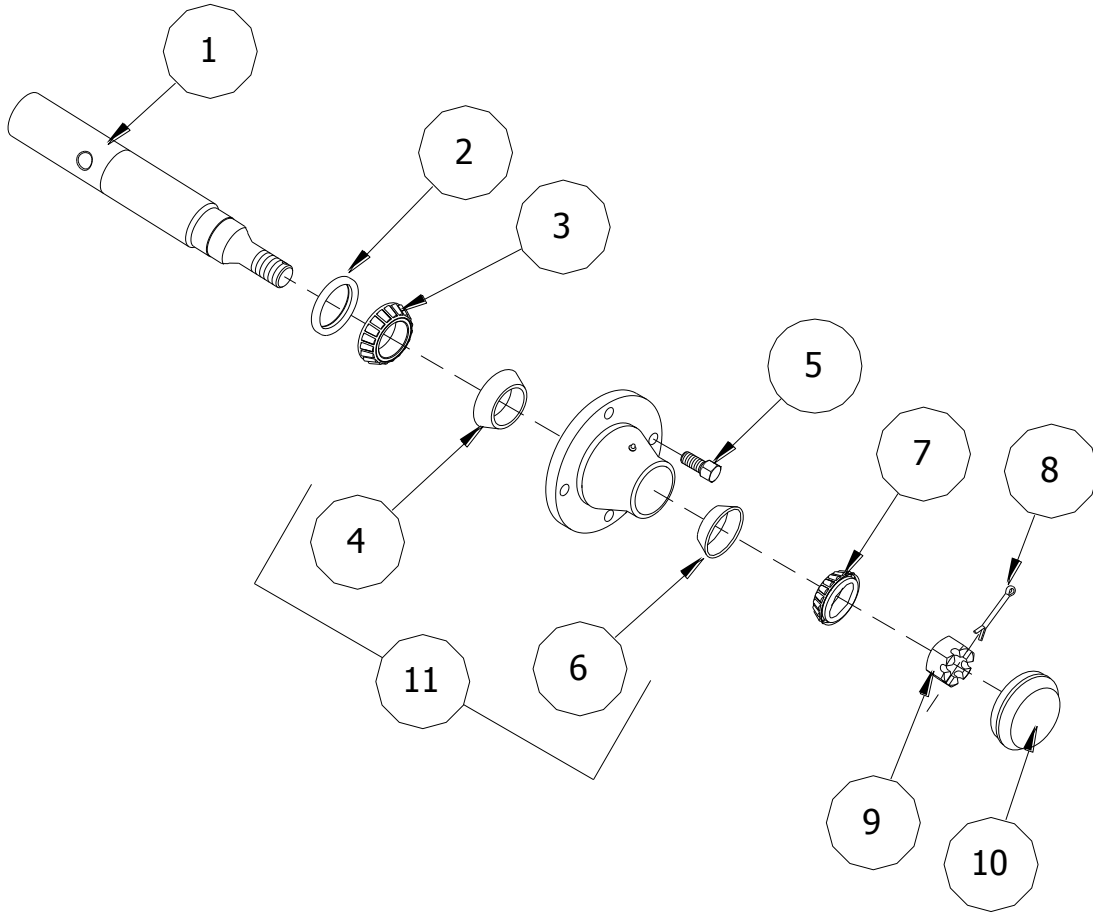
TIRE SIZE	TRANSPORT	FIELD USE	FIELD USE WITH GRANULAR APPLICATOR	TRANSPORT WITH GRANULAR APPLICATOR
12.5L X 15 (F-PLY) (Main Wheels)	40 PSI MIN.	25 PSI MIN.	30 PSI MIN.	55 PSI MIN.
7.5 x 14 (Caster Wheels)	N/A	20 PSI MIN. 22 PSI MIN.	20 PSI MIN. 22 PSI MIN.	N/A

CTD CASTER WHEEL HUB AND SPINDLE ASSEMBLY



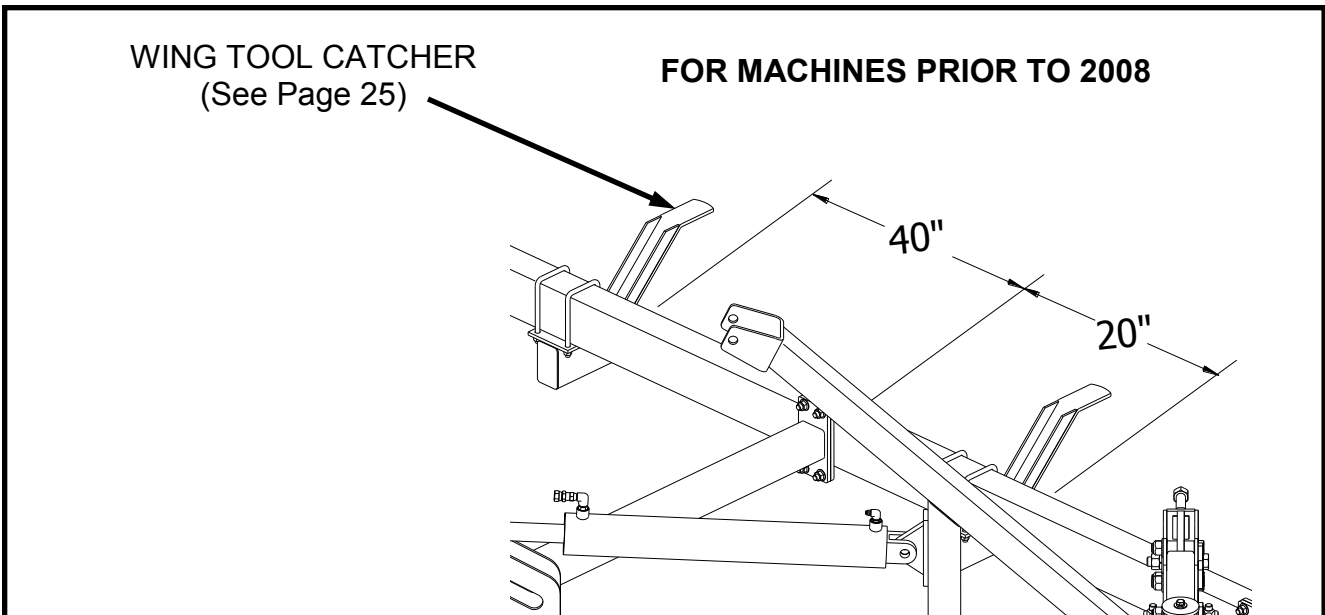
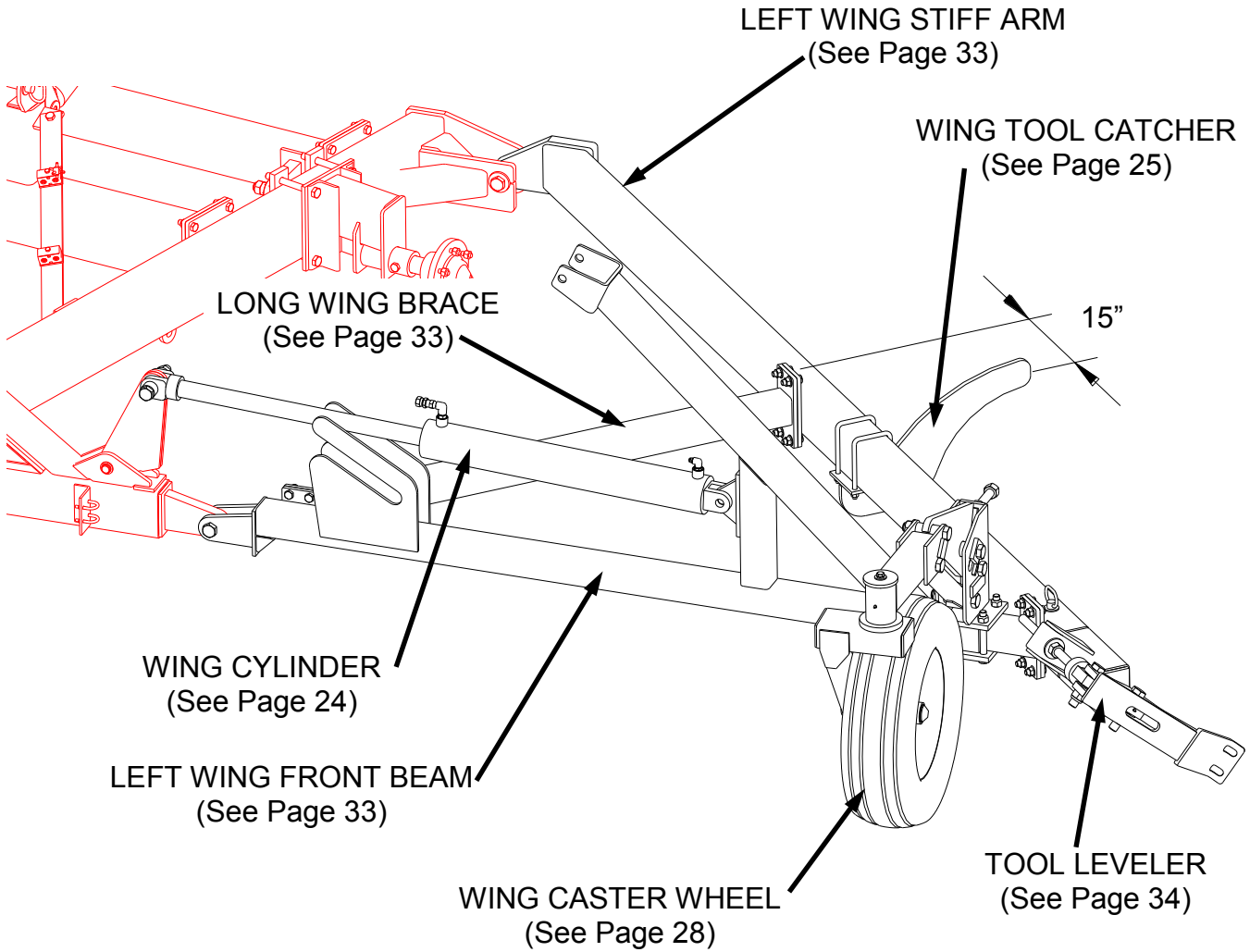
ITEM	PMF PART NO	KMC PART NO	DESCRIPTION	QTY
1	30-90540-07	-	SPINDLE, S411-A71SK HARROW	1
2	31-50909-08	-	SE-11 GREASE SEAL	1
3	31-10210-12	-	BRG, CONE LM 67048	1
4	31-10210-10	-	BRG, CUP LM 67010	1
5	31-10901-03	-	WB-10 WHEEL BOLT 1/2 - 20UNF	4
6	31-10210-02	-	BRG CUP, LM 11910	1
7	31-10210-04	-	BRG CONE, LM 11949	1
8	31-50912-02	-	3/16 X 1 1/2 COTTER PIN, PLT	1
9	31-10909-02	-	WB-30 SPINDLE NUT FOR 411 HUB	1
10	31-10902-06	-	DC-12 DUST CAP FOR 411 HUB	1
11	31-10900-07	-	H411 HUB CASTING, C/W BRG CUPS	1

ELDALE CASTER WHEEL HUB AND SPINDLE ASSEMBLY



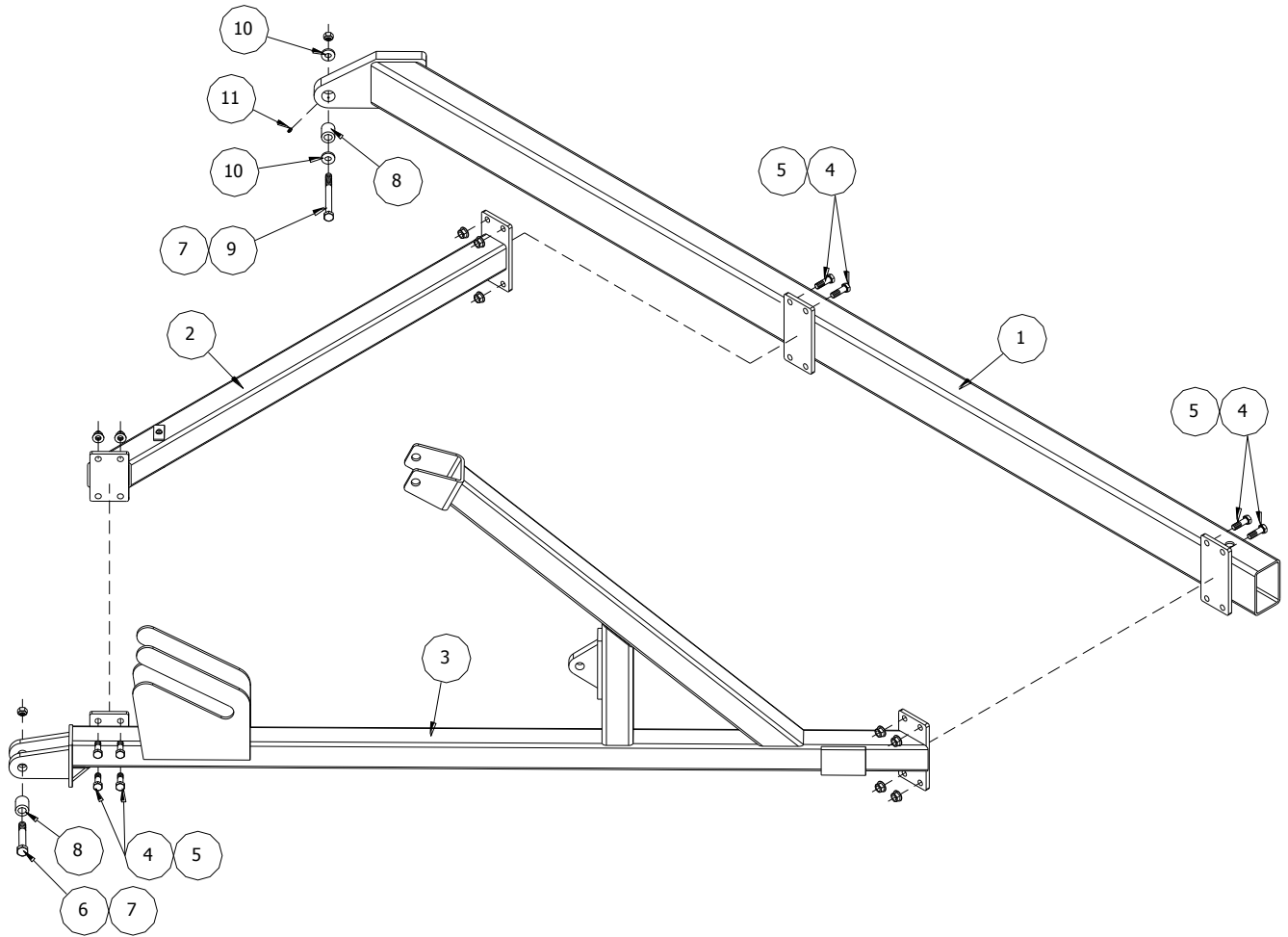
ITEM	PMF PART NO	KMC PART NO	DESCRIPTION	QTY
1	30-90540-11	-	SPINDLE, ELDALE, 411	1
2	31-50909-08	-	SE-11 GREASE SEAL	1
3	31-10210-12	-	BRG, CONE LM 67048	1
4	31-10210-10	-	BRG, CUP LM 67010	1
5	31-10901-03	-	WB-10 WHEEL BOLT 1/2 - 20UNF	4
6	31-10210-02	-	BRG CUP, LM 11910	1
7	31-10210-04	-	BRG CONE, LM 11949	1
8	31-50912-02	-	3/16 X 1 1/2 COTTER PIN, PLT	1
9	31-10909-02	-	WB-30 SPINDLE NUT FOR 411 HUB	1
10	31-10902-08	-	DUST CAP, ELDALE, FOR 2" BORE	1
11	31-10900-09	-	HUB CASTING, CW BRG CUPS	1

LEFT MAIN WING ASSEMBLY



30' ROTARY HARROW

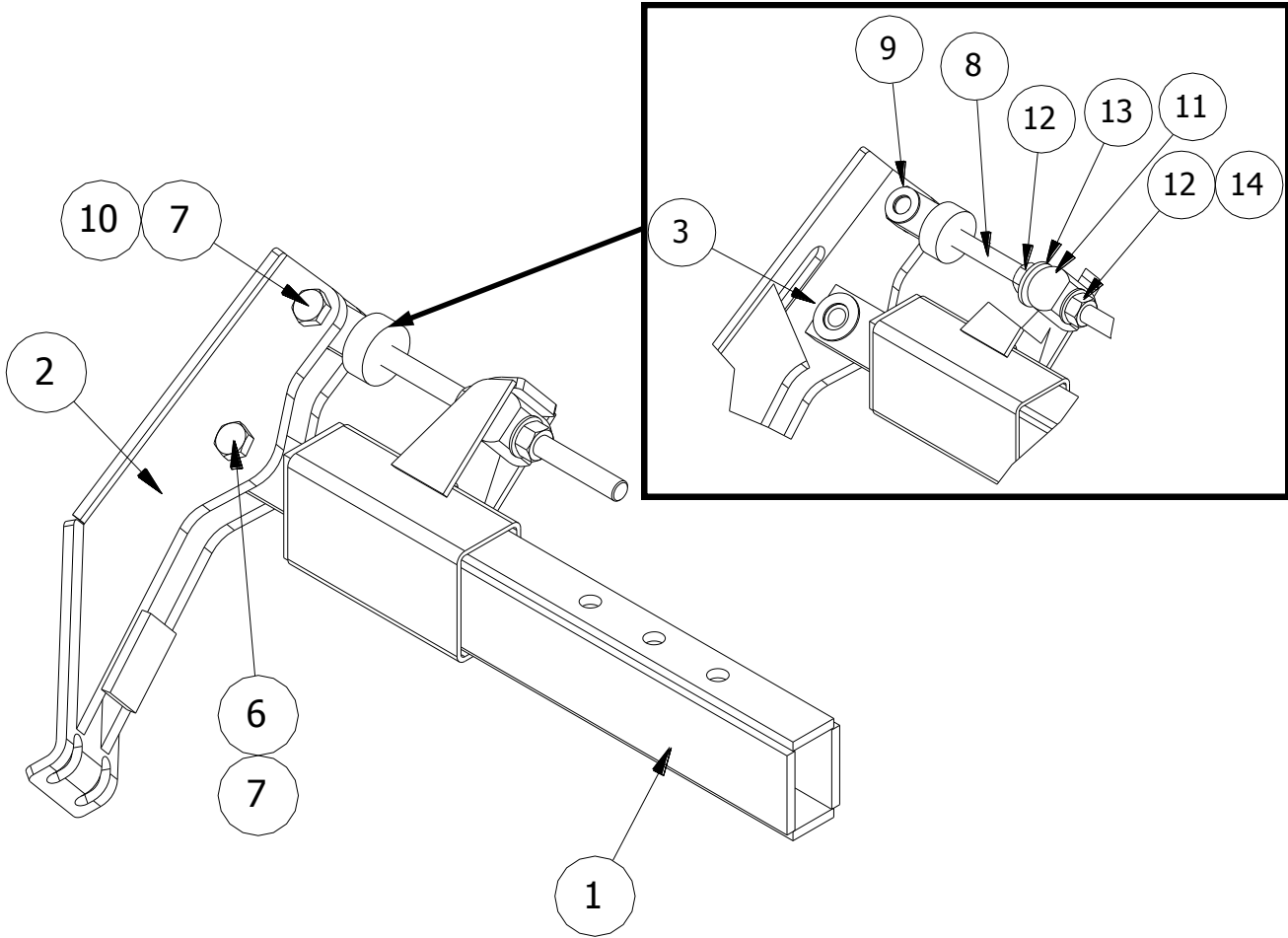
LEFT MAIN WING FRAME



ITEM	PMF PART NO	KMC PART NO	DESCRIPTION	QTY
1	05-55016-02	61-080-001	LEFT WING STIFF ARM	1
2	05-55018-01	-	LONG WING BRACE	1
3	05-55014-02	-	LEFT WING FRONT BEAM	1
4	31-50163-12	48-200029	5/8 X 2 UNC BOLT	12
5	-	68-010320	NUT, 5/8 TECHLOCK FLANGE GRD "G"	12
6	31-50199-03	48-200325	1 X 4 1/2 HX HD BOLT	1
7	31-50299-05	72-030100	1" UNITORQUE NUT G8 PLT	2
8	05-51011-01	61-026-024	BUSHING LONG	2
9	31-50199-07	-	1" X 7" HX HD BOLT G8 PLT	1
10	05-01648-01	61-050-012	WASHER, THRUST - UHMW	2
11	31-50904-02	02-050-005	GREASE NIPPLE, 1/4 UNF	1

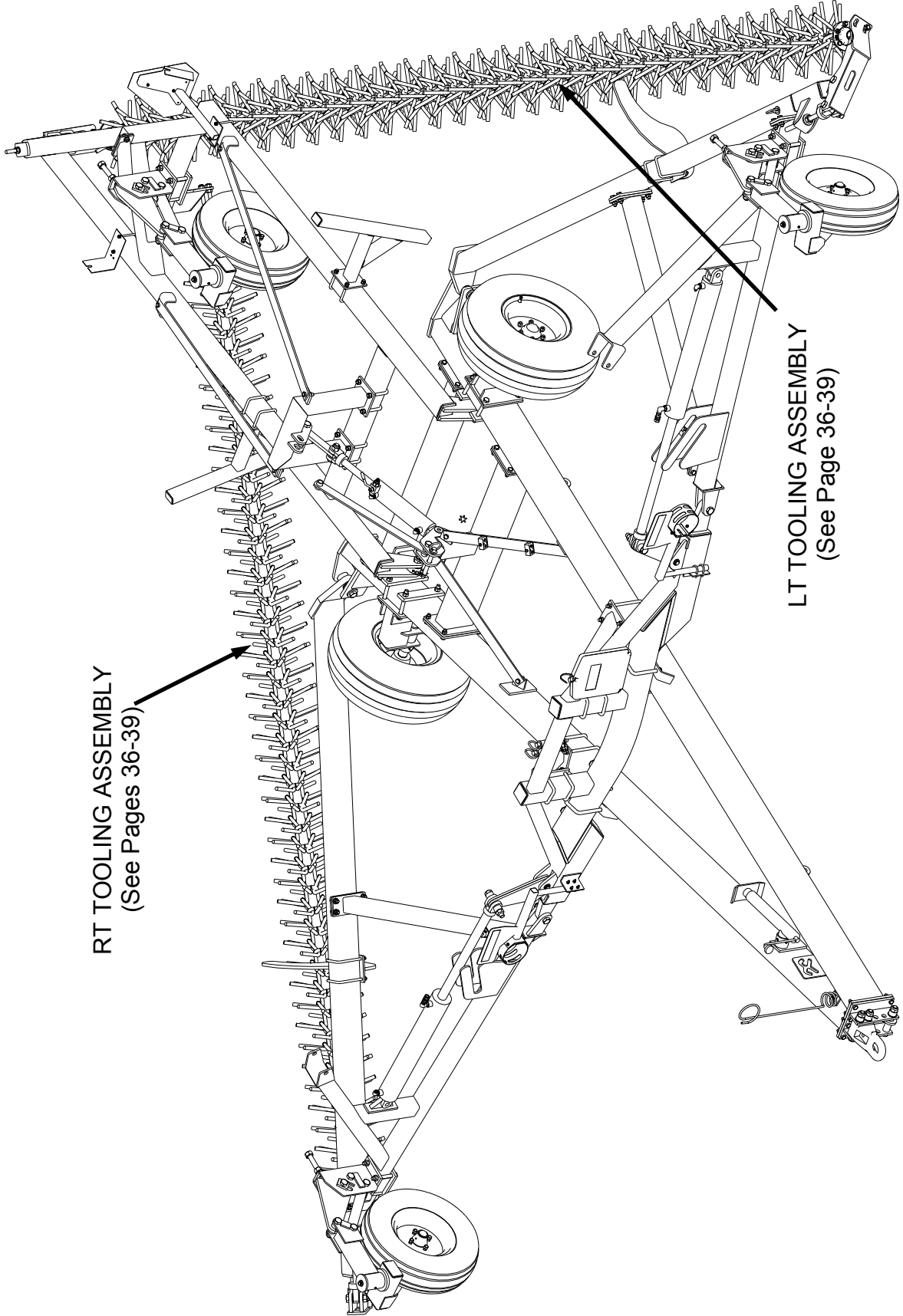
30' ROTARY HARROW

LEFT TOOL TENSIONER EXTENSION
(61-081-002)



ITEM	PMF PART NO	KMC PART NO	DESCRIPTION	QTY
1	05-51122-00	61-080-081	LH WING EXTENSION	1
2	05-51097-00	61-080-071	TOOL LEVER, LONG STROKE	1
3	-	02-050-005	FITTING, 1/4-28 GREASE	1
4	05-01648-01	61-050-012	THRUST WASHER	2
5	05-01646-01	61-026-023	BUSHING, HARDENED	1
6	31-50299-05	-	LOCKNUT, 1 STOVER G"C" PLT	1
7	-	48-200350	CAPSCREW, 1 X 5 G8 PLT	2
8	05-51098-00	61-080-072	TENSION ROD, LONG STROKE, PLT	1
9	31-50399-04	61-050-036	1" PLASTIC WASHER	2
10	-	72-010140	LOCKNUT, 1 NYLON	1
11	71-51004-00	61-026-025	BUSHING, TENSION ROD	1
12	-	68-010460	HEX NUT, 1 G8 PLT	1
13	71-51003-00	61-050-039	WASHER, ROD SUPPORT	1
14	-	62-020075	WASHER, 1 HARDENED SAE PLT	1

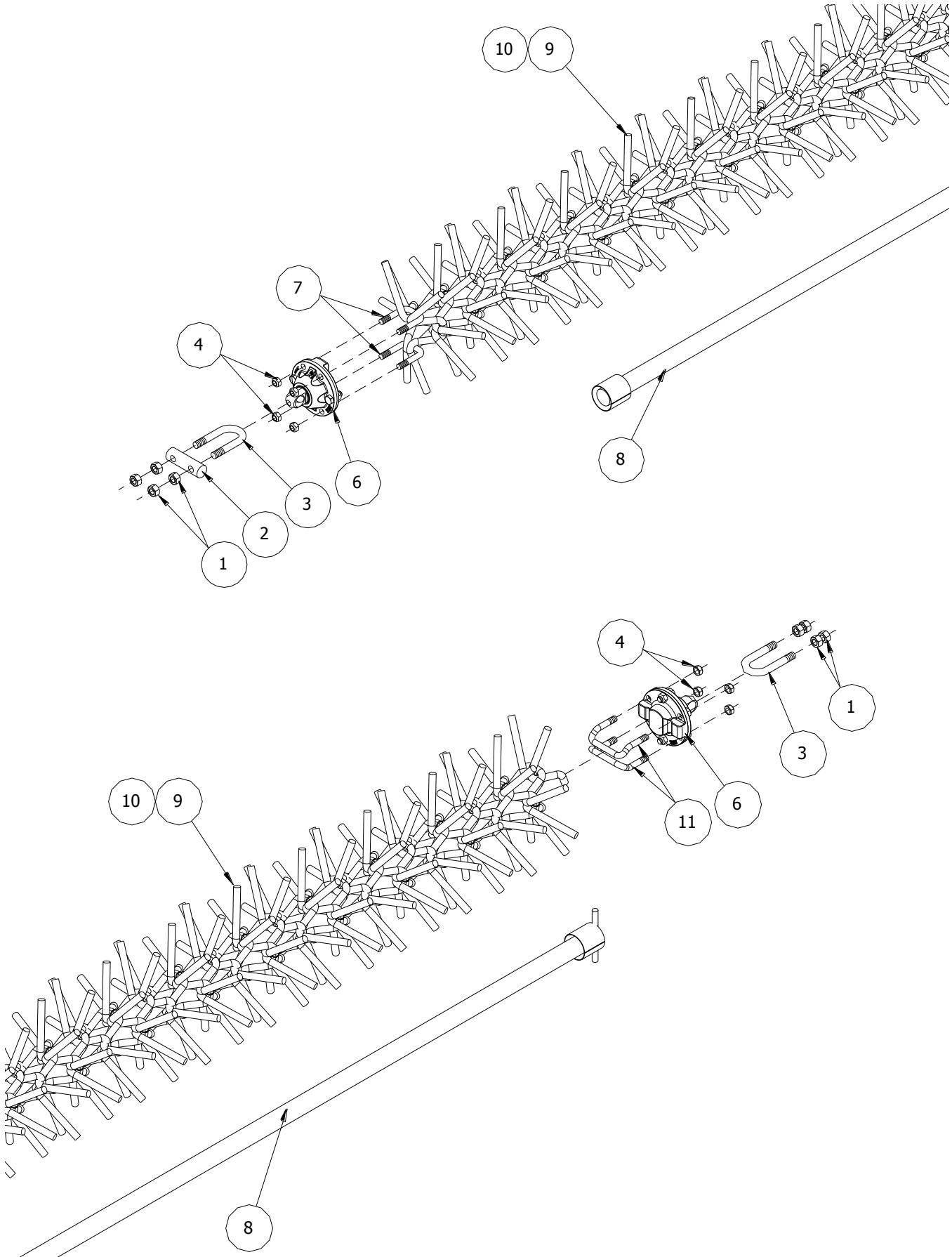
LEFT & RIGHT TOOLING ASSEMBLY



RT TOOLING ASSEMBLY
(See Pages 36-39)

LT TOOLING ASSEMBLY
(See Page 36-39)

30' ROTARY HARROW
LEFT & RIGHT SIDE TOOLING ASSEMBLY
(S/N PRE 30TA-00099)



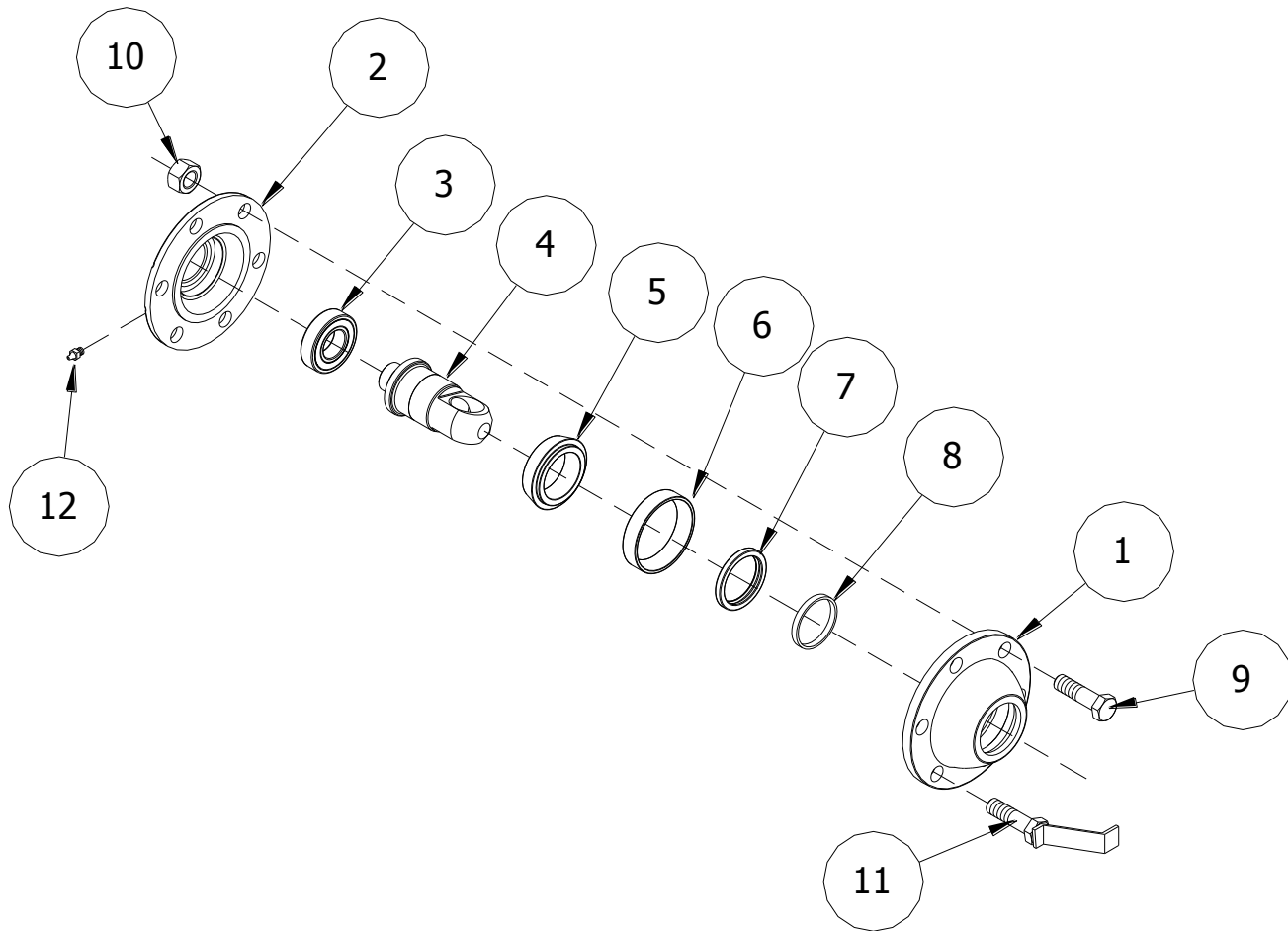
RIGHT SIDE TOOLING ASSEMBLY

ITEM	PMF PART NO	KMC PART NO	DESCRIPTION	QTY
1	31-50275-02	-	3/4 UNC HEX NUT G8 PLT	8
2	71-41500-00	-	SHAFT BEARING HOUSING MOUNT, PLT	1
3	31-10945-03	-	3/4-10 X 2.75W X 4.88L U-BOLT	2
4	31-50250-01	-	1/2 UNC HEX NUT PLT	8
5	31-50350-01	-	1/2 LOCKWASHER PLT	8
6	05-02000-01	-	ASSY, TOOL SPDL HSG	4
7	31-10946-03	-	1/2 NC 13, W=2.68. L=3.00 4140HTR	2
8	05-51091-01	-	CABLE R.H. 3003A	1
	-	-	CABLE - 2" DIA	18'-8"
9	05-02002-01	-	TOOL, HARROW - LARGE LH	93
10	05-02002-02	-	TOOL, HARROW - LARGE RH	93
11	31-10947-01	-	U-BOLT, 1/2-13 X 4.69W X 3L SP	2

LEFT SIDE TOOLING ASSEMBLY

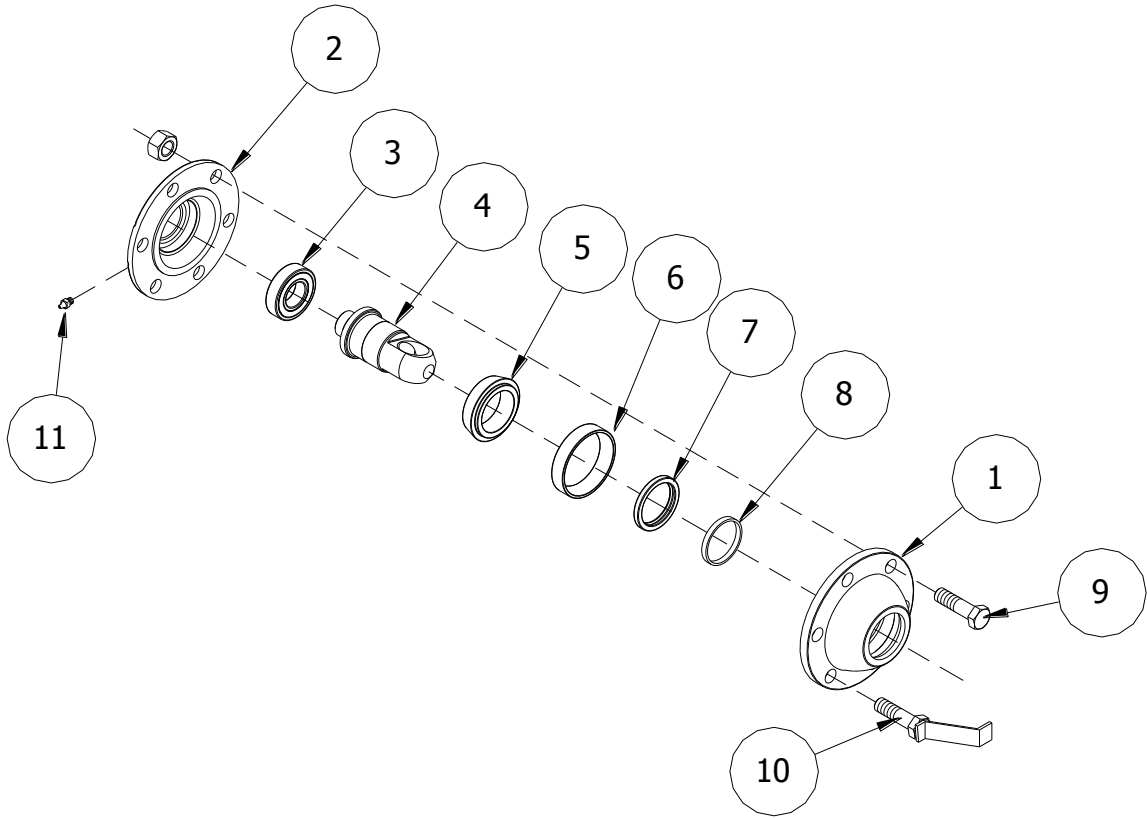
ITEM	PMF PART NO	KMC PART NO	DESCRIPTION	QTY
1	31-50275-02	-	3/4 UNC HEX NUT G8 PLT	8
2	71-41500-00	-	SHAFT BEARING HOUSING MOUNT, PLT	1
3	31-10945-03	-	3/4-10 X 2.75W X 4.88L U-BOLT	2
4	31-50250-01	-	1/2 UNC HEX NUT PLT	8
5	31-50350-01	-	1/2 LOCKWASHER PLT	8
6	05-02000-01	-	ASSY, TOOL SPDL HSG	4
7	31-10946-03	-	1/2 NC 13, W=2.68. L=3.00 4140HTR	2
8	05-51090-01	-	CABLE L.H. 3003A	1
	-	-	CABLE - 2" DIA	23'-1"
9	05-02002-01	-	TOOL, HARROW - LARGE LH	114
10	05-02002-02	-	TOOL, HARROW - LARGE RH	114
11	31-10947-01	-	U-BOLT, 1/2-13 X 4.69W X 3L SP	2

30' ROTARY HARROW
TOOL BEARING HOUSING
 (S/N Pre 30TA-00099)



ITEM	PMF PART NO	KMC PART NO	DESCRIPTION	QTY
1	05-01280-01	-	BRG HSG, FR (W/O HOOK)	1
2	05-01281-01	-	BRG HSG, (INSIDE) (NO HOLE)	1
3	31-10206-01	61-051-001	6206 DDU BEARING	1
4	05-01287-01	61-026-026	SHAFT, BRG HSG	1
5	31-10211-01	61-051-002	4T-JLM104948PK CONE	1
6	31-10211-02	61-051-003	4T-JLM104910PK CUP	1
7	31-50909-05	61-056-002	SEAL, CR19608	1
8	05-01785-01	61-056-001	SEAL, INSERT - BRG HSG	1
9	31-50150-03	-	1/2 X 1 1/2 UNC BOLT	1
10	31-50250-01	-	1/2 UNC HEX NUT PLT	2
11	05-51050-01	-	TRASH CUTTER ASSY	1
12	31-50904-02	02-050-005	GREASE NIPPLE, 1/4 UNF	1

**TOOL BEARING HOUSING
(S/N 30TA-01001 TO 2006)**



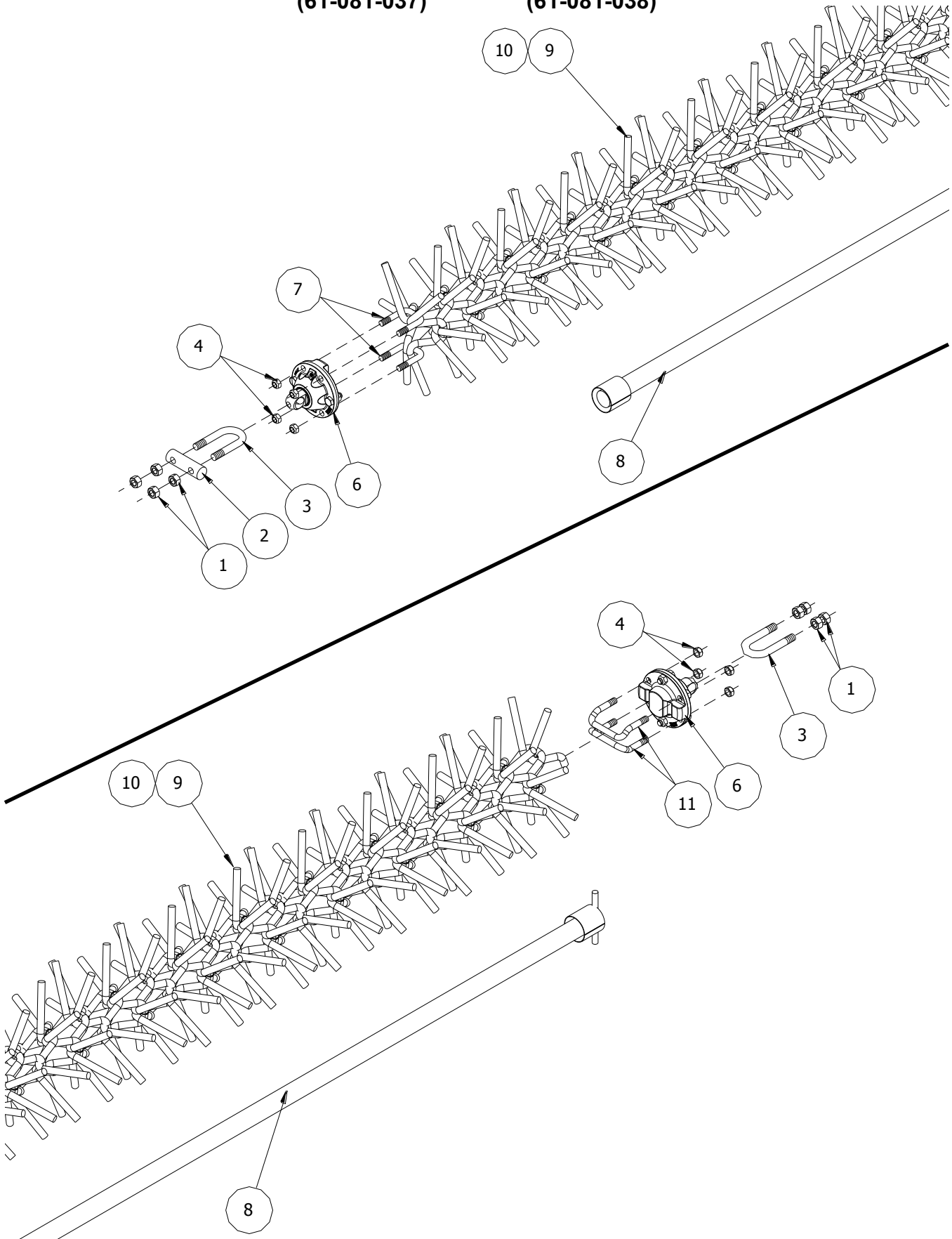
ITEM	PMF PART NO	KMC PART NO	DESCRIPTION	QTY
1	05-01280-02	-	BRG HSG HALF, W/HOLE 5/8 BOLT	1
2	05-01281-02	-	HARROW BRG ASY NO HOLE 5/8 BOLT	1
3	31-10206-01	61-051-001	6206 DDU BEARING	1
4	05-01287-01	61-026-026	SHAFT, BRG HSG	1
5	31-10211-01	61-051-002	4T-JLM104948PK CONE	1
6	31-10211-02	61-051-003	4T-JLM104910PK CUP	1
7	31-50909-05	61-056-002	SEAL, CR19608	1
8	05-01785-01	61-056-001	SEAL, INSERT - BRG HSG	1
9	31-50163-14	-	5/8 X 1 1/2 UNC BOLT	1
	31-50263-05	72-020050	5/8 UNC UNITORQUE NUT G8 PLT	1
10	05-51069-01	-	TRASH CUTTER, 5/8 BOLT	1
	31-50250-05	-	1/2 UNC UNITORQUE NUT G8 PLT	1
11	31-50904-02	02-050-005	GREASE NIPPLE, 1/4 UNF	1

30' ROTARY HARROW

LEFT & RIGHT SIDE TOOLING ASSEMBLY
(S/N 30TA-01001 TO PRESENT)

LH
(61-081-037)

RH
(61-081-038)



**RIGHT SIDE TOOLING ASSEMBLY
(S/N 30TA-01001 TO PRESENT)**

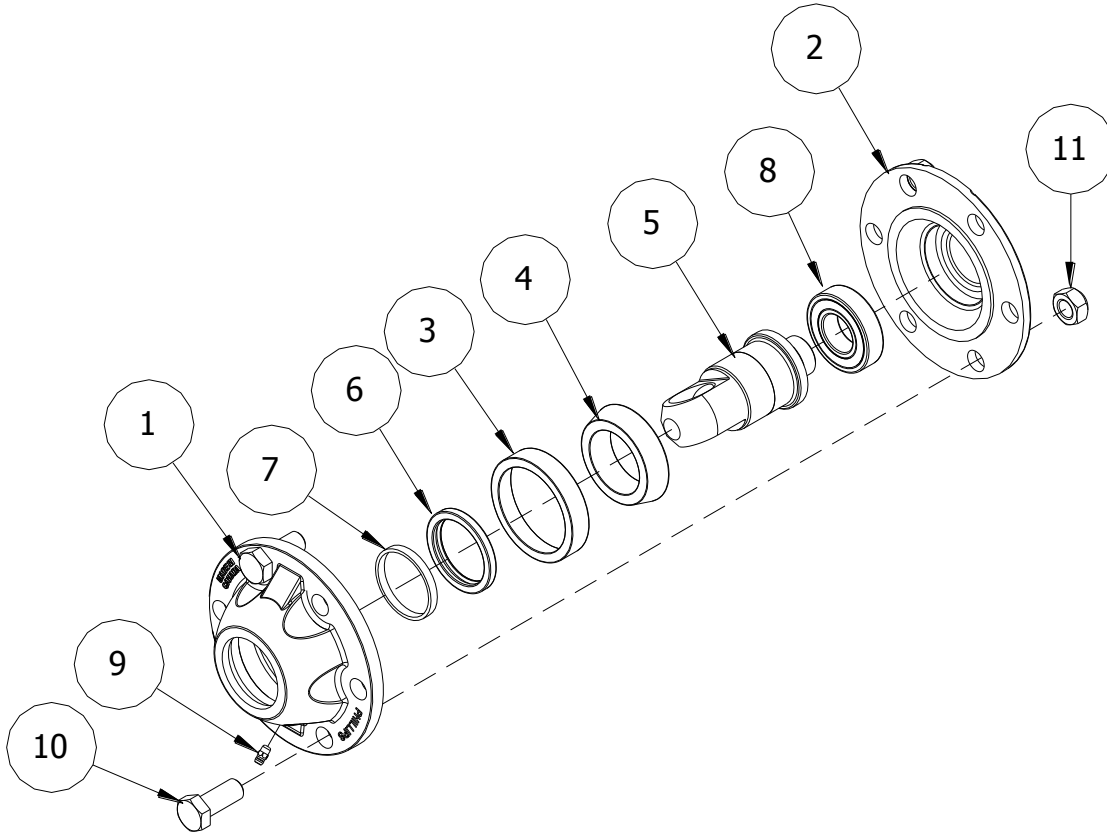
ITEM	PMF PART NO	KMC PART NO	DESCRIPTION	QTY
1	31-50275-02	-	3/4 UNC HEX NUT G8 PLT	8
2	71-41500-00	61-026-022	SHAFT BEARING HOUSING MOUNT, PLT	1
3	31-10945-03	61-050-026	3/4-10 X 2.75W X 4.88L U-BOLT	2
4	31-50263-05	-	5/8 UNC UNITORQUE NUT G8 PLT	8
6	05-02000-02	-	TOOL HOUSING ASSEMBLY, 5/8 BOLTS	2
7	31-10946-23	-	U-BOLT, 5/8 X 2 11/16W X 3L	2
8	05-51091-01	61-050-017	CABLE R.H. 3003A	1
	-	-	CABLE - 2" DIA	16'-10"
9	05-02002-01	61-050-014	TOOL, HARROW - LARGE LH	93
10	05-02002-02	61-050-015	TOOL, HARROW - LARGE RH	93
11	31-10947-02	-	U-BOLT, BENT, 5/8 X 4 11/16 X 3L G5	2

**LEFT SIDE TOOLING ASSEMBLY
(S/N 30TA-01001 TO PRESENT)**

ITEM	PMF PART NO	KMC PART NO	DESCRIPTION	QTY
1	31-50275-02	-	3/4 UNC HEX NUT G8 PLT	8
2	71-41500-00	61-026-022	SHAFT BEARING HOUSING MOUNT, PLT	1
3	31-10945-03	61-050-026	3/4-10 X 2.75W X 4.88L U-BOLT	2
4	31-50263-05	-	5/8 UNC UNITORQUE NUT G8 PLT	8
6	05-02000-02	-	TOOL HOUSING ASSEMBLY, 5/8 BOLTS	2
7	31-10946-23	-	U-BOLT, 5/8 X 2 11/16W X 3L	2
8	05-51090-01	61-050-016	CABLE L.H. 3003A	1
	-	-	CABLE - 2" DIA	21'-4"
9	05-02002-01	61-050-014	TOOL, HARROW - LARGE LH	114
10	05-02002-02	61-050-015	TOOL, HARROW - LARGE RH	114
11	31-10947-02	-	U-BOLT, BENT, 5/8 X 4 11/16W X 3L G5	2

30' ROTARY HARROW

TOOLING HOUSING ASSEMBLY
 (PMF # 05-02004-00) (KMC # 16-081-032)
 (2007 TO PRESENT)

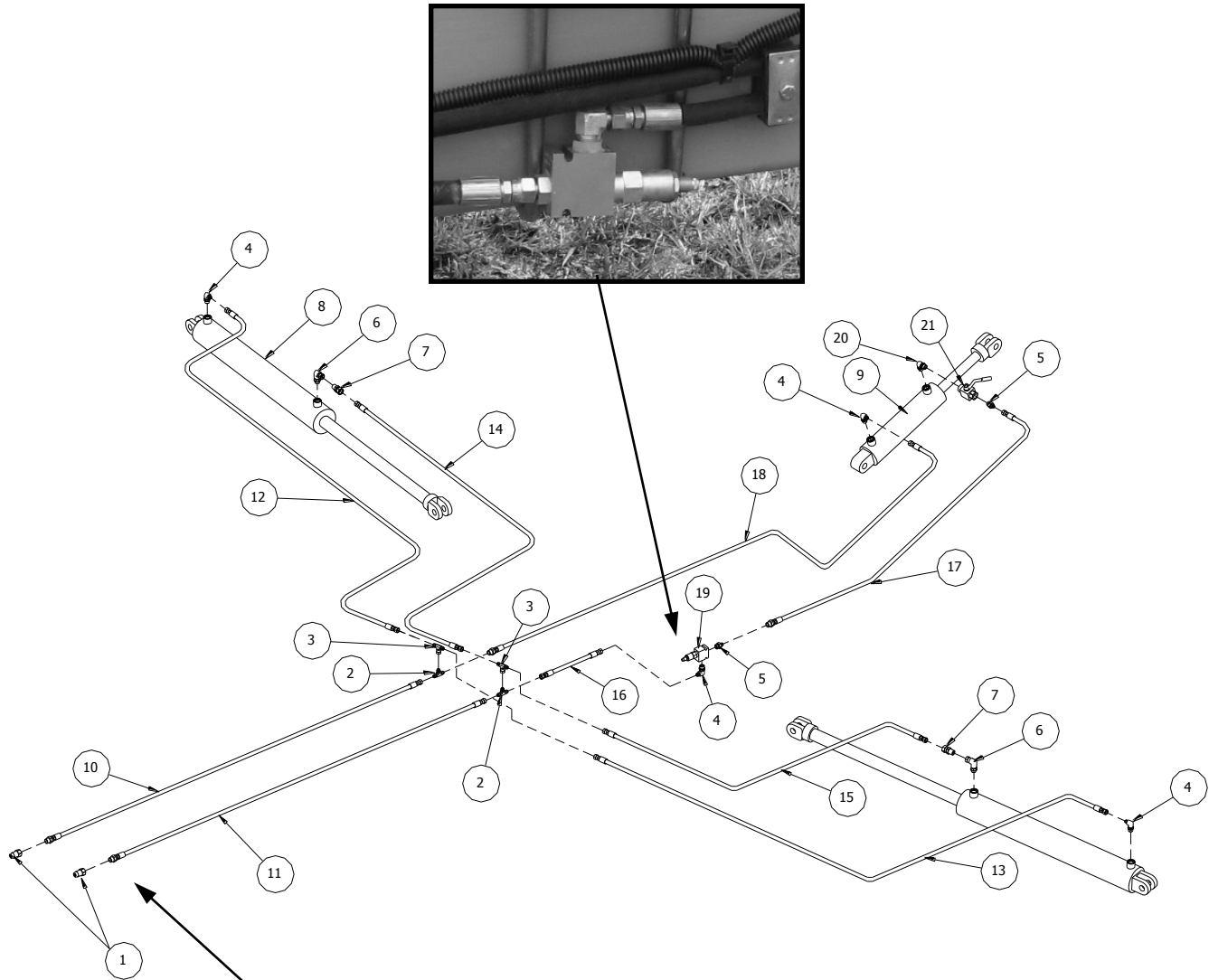


ITEM	PMF PART NO	KMC PART NO	DESCRIPTION	QTY
1	05-00002-01	61-057-005	BRG HSG HALF, W HOLE, 5/8 PLT	1
2	05-00001-01	61-057-004	CASTING, BEARING HSG, BACK W/PADS	1
3	31-10211-02	61-051-003	4T-JLM104910PK CUP	1
4	31-10211-01	61-051-002	4T-JLM104948 PK CONE	1
5	05-01287-01	61-026-026	SHAFT, BRG HSG	1
6	31-50909-05	61-056-002	SEAL, CR19608	1
7	05-01785-01	61-056-001	SEAL, INSERT- BRG HSG	1
8	31-10206-01	61-051-001	6206 DDU BEARING	1
9	31-50904-02	02-050-005	FITTING, 1/4-28 STRT GREASE	1
10	31-50163-14	48-200042	CAPSCREW, 5/8 X 1 1/2 NC G8 PLT	2
11	31-50263-05	72-020050	LOCKNUT, 5/8 NC STOVER G\"C\" PLT	2

30' ROTARY HARROW

HYDRAULIC COMPONENTS

HYDRAULIC SCHEMATIC

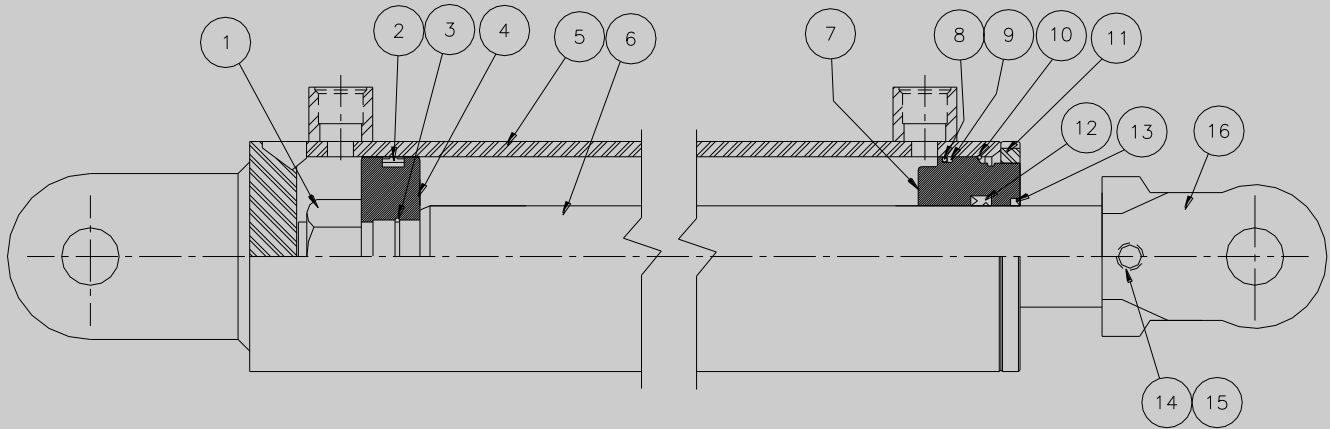


30' ROTARY HARROW

ITEM	PMF PART NO	KMC PART NO	DESCRIPTION	QTY
1	31-10530-01	47-059-002	COUPLER, M-PIONEER X 1/2 F-NPT	2
2	31-10503-16	61-059-024	TEE, #6 MJIC X #6 MJIC X #6FJIC	2
3	31-10503-17	61-059-025	TEE, #6 MJIC X 3	2
4	31-10503-15	61-059-023	ELBOW, #8 MORB X #6 MJIC	4
5	31-10503-06	61-059-022	#8 MORB - #6MJIC	2
6	31-10503-18	42-059-022	ELBOW, #8 MORB X 1/2 F-NPT	2
7	31-10551-00	21-059-002	ORIFICE BLANK, 1/2 MNPTX A 1/2 FNPT	2
8	31-10517-04	61-061-014	4 X 30 HYD CYLINDER, (-2013)	(2)
	-	61-061-027	4 X 30 HYD CYLINDER, (2014-)	2
9	31-10520-01	61-061-015	3.5 X 12 STROKE CYLINDER (-2013)	(1)
	-	61-061-023	3.5 X 12 STROKE CYLINDER (2014-)	1
10	05-55001-01	61-059-015	HOSE, 3/8 X 165, 1/2 MNPTF-6JICX	1
11	05-55001-01	61-059-015	HOSE, 3/8 X 165, 1/2 MNPTF-6JICX	1
12	05-55001-04	61-059-018	HOSE, 3/8 X 153, 6FJICX-6FJICX	1
13	05-55001-05	61-059-019	HOSE, 3/8 X 124.5, 6FJICX-6FJICX	1
14	05-55001-07	61-059-021	HOSE, 3/8 X 122, 6FJICX-.5MNPTF	1
15	05-55001-06	61-059-020	HOSE, 3/8 X 93, 6FJICX-.5MNPTF	1
16	05-55001-02	61-059-016	HOSE, 3/8 X 13.25, 6FJICX-6FJICX	1
17	05-55001-03	61-059-017	HOSE, 3/8 X 80, 6FJICX-6FJICX	1
18	05-55001-03	61-059-017	HOSE, 3/8 X 80, 6FJICX-6FJICX	1
19	31-10543-01	61-061-016	SEQU. RV2-10-S-8T-35	1
20	-	33-059-123	ADAPTER, 8MB-8MB-90	1
21	-	33-061-149	BALL VALVE, TANK CYL	1

30' ROTARY HARROW

TAIL HYDRAULIC CYLINDER (3 1/2" BORE X 12" STROKE)
 (PMF# 31-10520-01) (KMC # 61-061-015) (Prior to 2014)



ITEM	PMF PART NO	KMC PART NO	DESCRIPTION	QTY
1	-	07-061-045	LOCKNUT, 1 1/8-12 G"C"	1
2	-	33-056-039	PSP PISTON SEAL, 3.5B	1
3	-	07-061-047	ORING, 1.00 X 1.125	1
4	-	07-061-046	PISTON, 3.5 DIA	1
5	-	61-061-007	CYL BODY, 3.5	1
6	-	61-061-008	ROD CYL 1.5 X 18.625	1
7	-	61-061-009	GUIDE 3.5 - 1.5	1
8	-	33-056-023	ORING NT, 3.25 X 3.50	1
9	-	33-061-055	BACKUP RING 3.25 X 3.50	1
10	-	48-061-011	RET RING RD INT, 3.5	1
11	-	48-061-013	SPANNER NUT, .375 X 4.00	1
12	-	61-061-005	UCUP LIP 1.50 X 1.875 X .312	1
13	-	23-061-038	WIPER RING, 1.5	1
14	-	33-061-036	BALL NYLON, .25 G2	1
15	-	54-020010	SETSCREW, 3/8-16 X .375	1
16	-	16-061-048	ROD CLEVIS, 1.5-12	1
17	-	61-061-006	SEAL KIT, 3.5 X 12 CYINDER	-

3 1/2 X 12 HYDRAULIC CYLINDER (BAILEY)

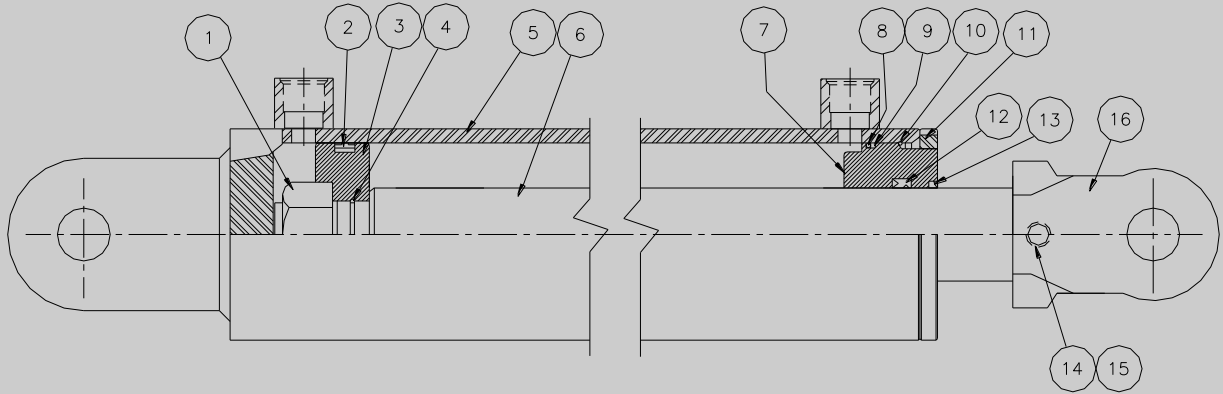
(61-061-023) (Tail Hydraulic Cylinder)
 (Used on Machines From 2014 to Present)

Bailey's Hydraulic Cylinder (61-061-023) will replace
 Energy's Hydraulic Cylinder (61-061-015).
 Bailey will not sale any repair parts except for a Seal Kit.

USE SEAL KIT # 61-061-024

30' ROTARY HARROW

WING HYDRAULIC CYLINDER (4" BORE X 30" STROKE)
 (PMF # 31-10517-04) (KMC # 61-061-014) (Prior to 2014)



ITEM	PMF PART NO	KMC PART NO	DESCRIPTION	QTY
1	-	23-061-004	NUT LOCK, T 1/4-12 G"C"	1
2	-	21-061-074	PSP PISTON SEAL, 4" B	1
3	-	59-061-008	PISTON, 4"	1
4	-	16-061-042	O-RING, 1.125 X 1.250	1
5	-	61-061-012	CYL BODY, 4.00 ID	1
6	-	61-061-013	ROD CP 2 X 35.375	1
7	-	59-061-011	GUIDE, 4 OD - 2 ID	1
8	-	21-061-065	ORING, 3.75 X 4.00	1
9	-	21-061-068	BACKUP RING, 3.75 X 4.00	1
10	-	48-061-022	RET RING RD INT, 4	1
11	-	48-061-023	SPANNER NUT, .375 X 4.5	1
12	-	59-061-012	U-CUP LIP 2 X 2.375 X .312	1
13	-	16-061-045	WIPER RING, 2	1
*14	-	54-020010	SETSCREW, 3/8-16 X .375	1
*15	-	33-061-036	BALL NYLON, .250	1
*16	-	08-061-019	ROD CLEVIS, 1.25-12 UNF	1
17	-	59-061-007	SEAL KIT, 4.00 BORE—2.00 ROD	-

*THESE PARTS ARE NOT INCLUDED IN CYLINDER (61-061-014)

4 X 30 X HYDRAULIC CYLINDER (BAILEY)

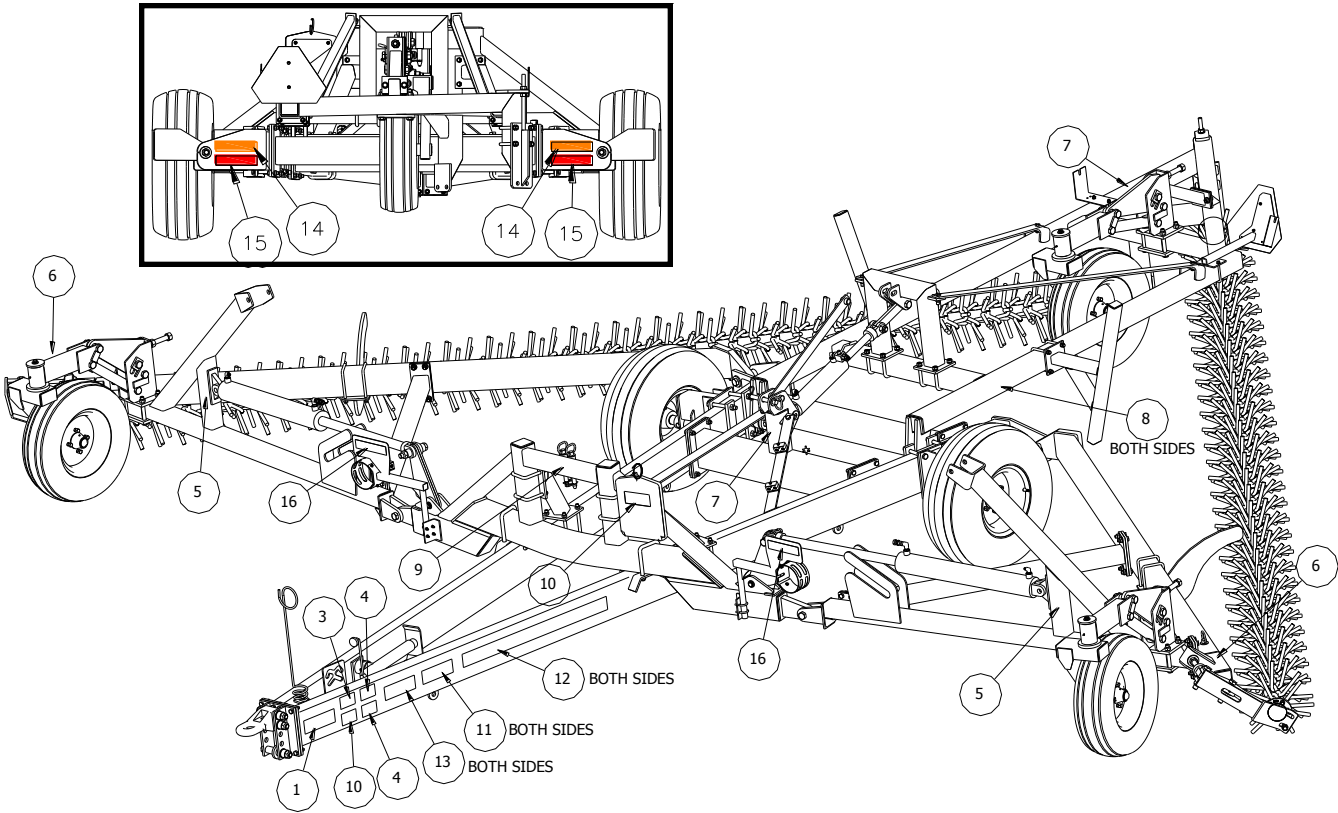
(61-061-027) (Wing Hydraulic Cylinder)
 (Used on Machines From 2014 to Present)

Bailey's Hydraulic Cylinder (61-061-027) will replace
 Energy's Hydraulic Cylinder (61-061-014).
 Bailey will not sale any repair parts except for a Seal Kit.

USE SEAL KIT # 61-061-028

MISCELLANEOUS COMPONENTS

DECAL SCHEMATIC

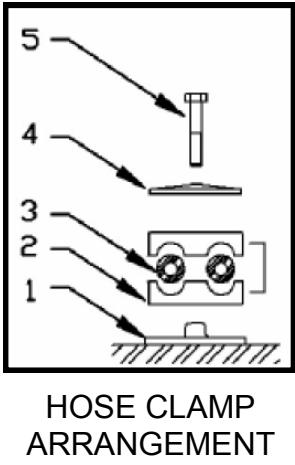
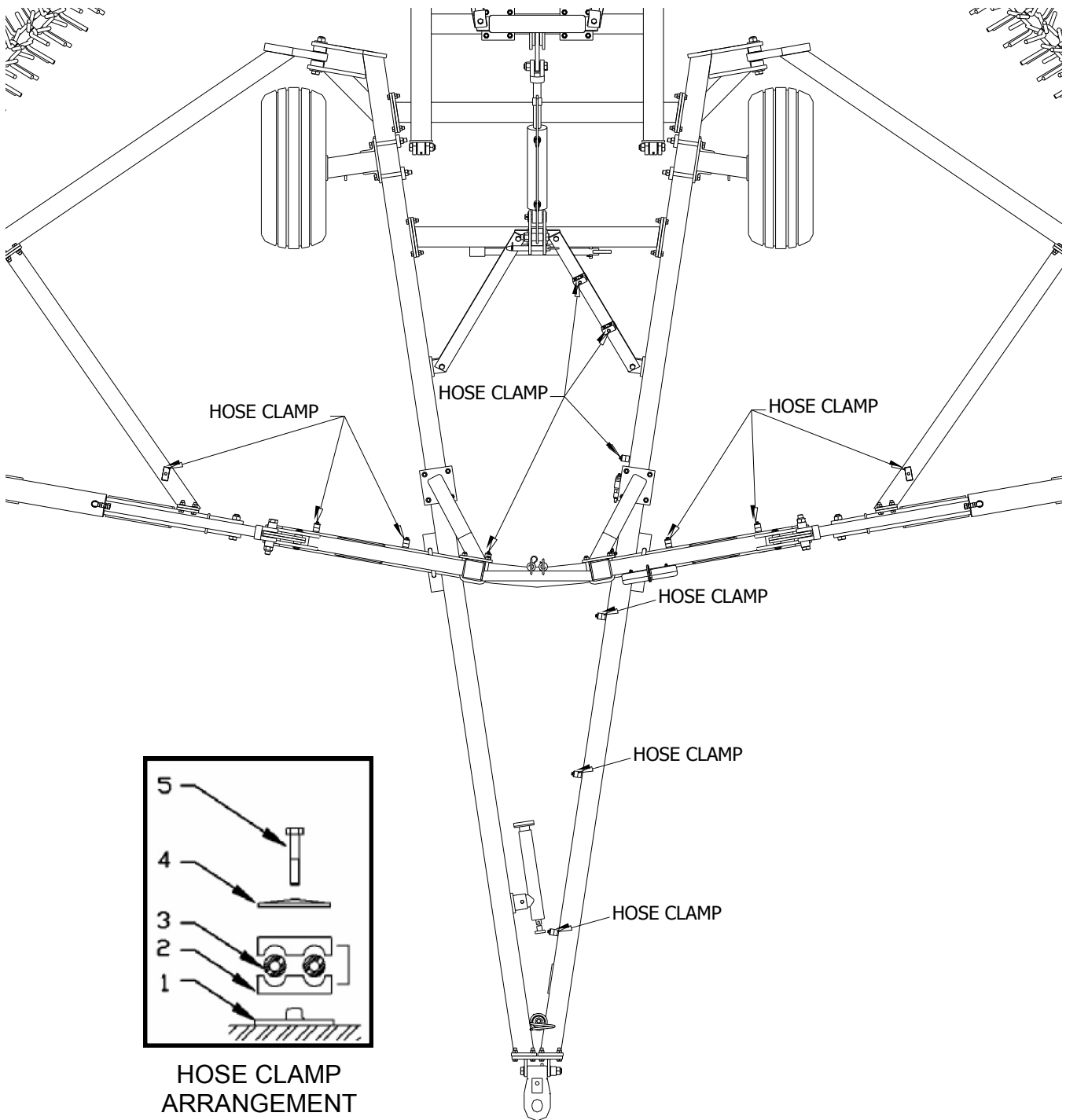


ITEM	PMF PART NO	KMC PART NO	DESCRIPTION	QTY
1	-	61-050-007	DECAL, 30' TIRE PRESSURE	1
2	31-11130-09	-	DECAL, ESCAPING FLUIDS HAZARD	1
3	31-11130-10	61-050-050	DECAL, ELECTROCUTION HAZARD	1
4	31-11130-17	61-050-051	DECAL, DO NOT RAISE IN MOTION	1
5	31-11130-01	61-050-043	DECAL, FALLING WING HAZARD	2
6	31-11130-08	61-050-049	DECAL, ATTENTION TOOL TENSION	2
7	31-11130-05	61-050-046	DECAL, TAIL TRANSPORT LOCK	2
8	31-11130-02	61-050-044	DECAL, FALLING TAIL HAZARD	2
9	31-11130-04	61-050-045	DECAL, ATTENTION TRANSPORT LOCK	1
10	31-11148-00	61-050-052	DECAL, READ MANUAL INSTRUCTIONS	1
11	31-11108-03	61-050-041	DECAL, 3003	2
12	31-11106-01	61-050-040	DECAL, PHILLIPS HARROW DECAL	2
13	-	16-050-035	DECAL, KMC 4 X 14	2
14	31-11129-01	-	DECAL, ORANGE VISIBILITY	2

30' ROTARY HARROW

ITEM	PMF PART NO	KMC PART NO	DESCRIPTION	QTY
15	31-11111-01	-	DECAL, RED REFLECTIVE	2
16	31-11110-01	-	DECAL, YELLOW REFLECTIVE	2

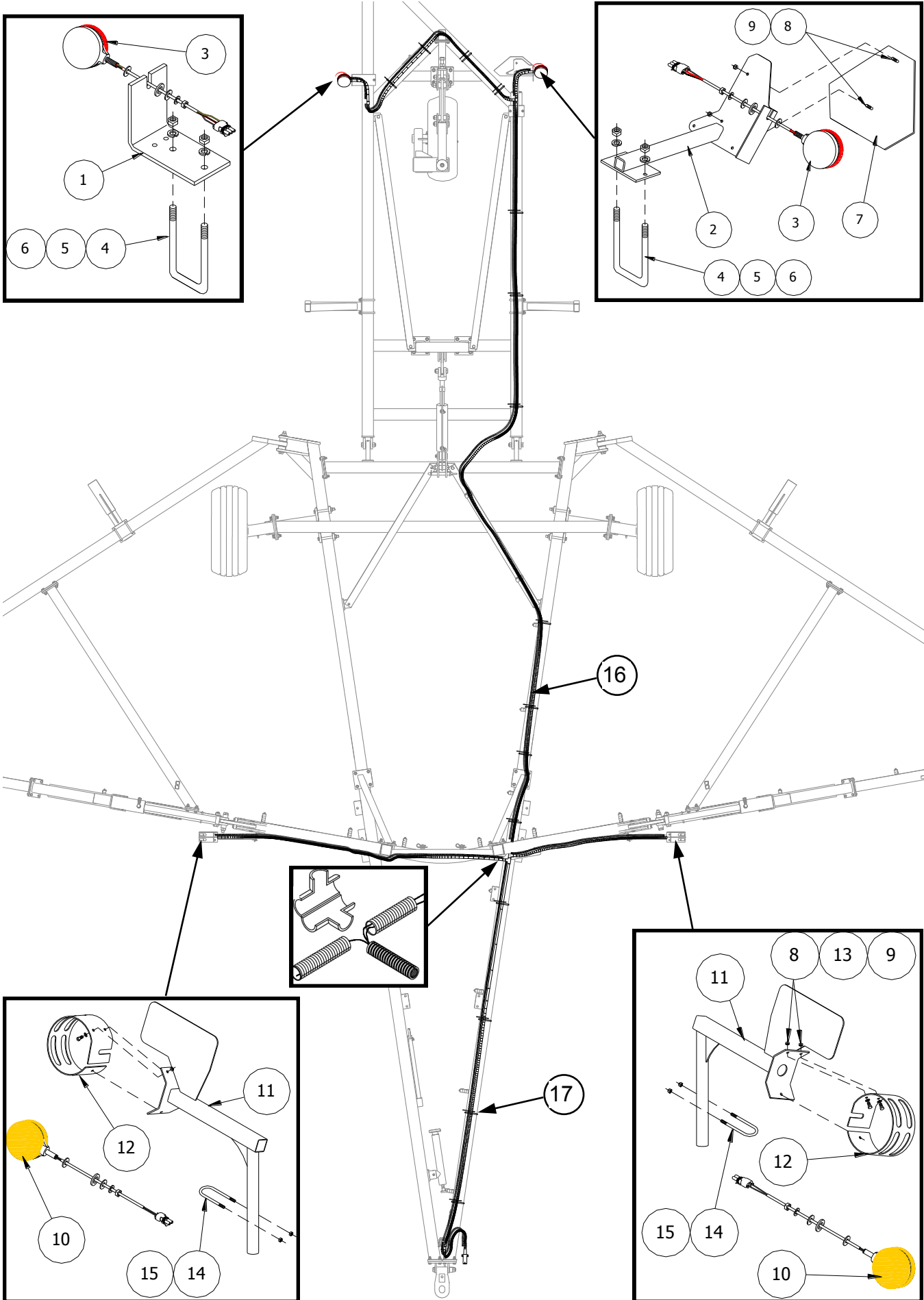
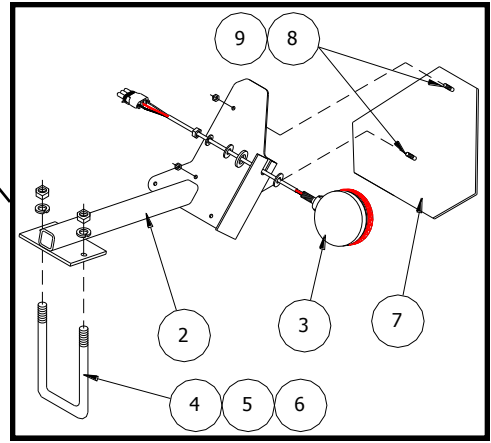
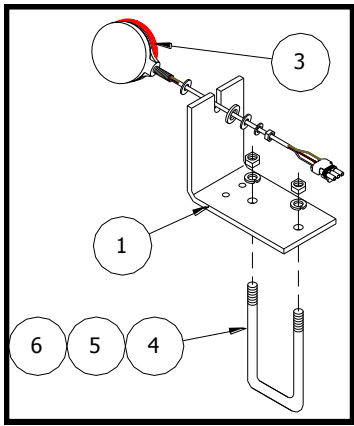
30' ROTARY HARROW
HOSE CLAMP SCHEMATIC



ITEM	PMF PART NO	KMC PART NO	DESCRIPTION	QTY
1	30-90550-06	-	HYCON HOSE CLAMP WELD PLATE	1
2	30-90550-03	-	HYCON PLASTIC INSERT PAIR	1
3	N/A	-	HOSE LOCATION	N/A
4	30-90550-07	-	HYCON TOP PLATE	1
5	31-50131-08	-	5/16 X 1 3/4 UNC BOLT	1

30' ROTARY HARROW

30' ROTARY HARROW



30' ROTARY HARROW
LIGHTING SCHEMATIC

ITEM	PMF PART NO	KMC PART NO	DESCRIPTION	QTY
1	30-90376-40	61-027-085	RIGHT TAIL MOUNT	1
2	05-51066-01	61-080-064	TAIL LIGHT SMV SIGN	1
3	05-51064-01	-	RED TAIL LIGHT ASSEMBLY	2
4	31-10946-21	20-080-008	U-BOLT, 3/8 X 4 3/4 X 4 7/16	2
5	31-50338-01	66-010150	LOCKWASHER, 3/8 PLT	4
6	31-50238-01	68-010150	HEX NUT, 3/8 PLT	4
7	31-11400-01	03-050-068	EMBLEM, S.M.V.	1
8	-	48-110000	CAPSCREW, 1/4 X 3/4 G8 PLT	8
9	-	72-010055	LOCKNUT, 1/4 NYLON INSERT	8
10	07-10058-00	-	LAMP AND WIRE ASSY	2
11	05-51072-01	61-080-067	EXTREME LIGHT BRACKET, HARROW	2
12	07-10068-00	61-027-089	EXTREMITY LIGHT SHIELD	2
13	-	62-010010	FLATWASHER,	6
14	31-10945-02	61-050-025	U-BOLT, 5-16 X 1.69 X 2.19	4
15	31-50231-02	72-010025	LOCKNUT, 5/16 STOVER G"B"	8
16	05-55021-01	05-55021-01	WIRING HARNESS ASSY, 3003A	1
17	31-10958-02	-	HD TIE WRAP 21 15/32" BLACK	25

30' ROTARY HARROW

The following is a list of serial numbers issued to our machines at the beginning of each year. To determine when a unit was made, find the range within which the particular serial number falls. It would have been produced between January 1 to December 31 of that year.

YEAR	SERIAL NUMBERS
2007	76369-77883
2008	77884-79891
2009	79892-80944
2010	80945-81775
2011	81776-83453
2012	83454-85092
2013	85093-86418
2014	86419-87790
2015	87791-89096
2016	89097-



DEPENDABLE EQUIPMENT FOR PROGRESSIVE FARMING

Visit us at www.kelleymfg.com



KELLEY MANUFACTURING CO.

80 Vernon Drive / Zip 31794
P.O. Drawer 1467 / Zip 31793
Tifton, GA



MADE IN AMERICA

Tel: 229-382-9393
Toll Free: 1-800-444-5449
Fax: 229-382-5259

Email Address: info@kelleymfg.com